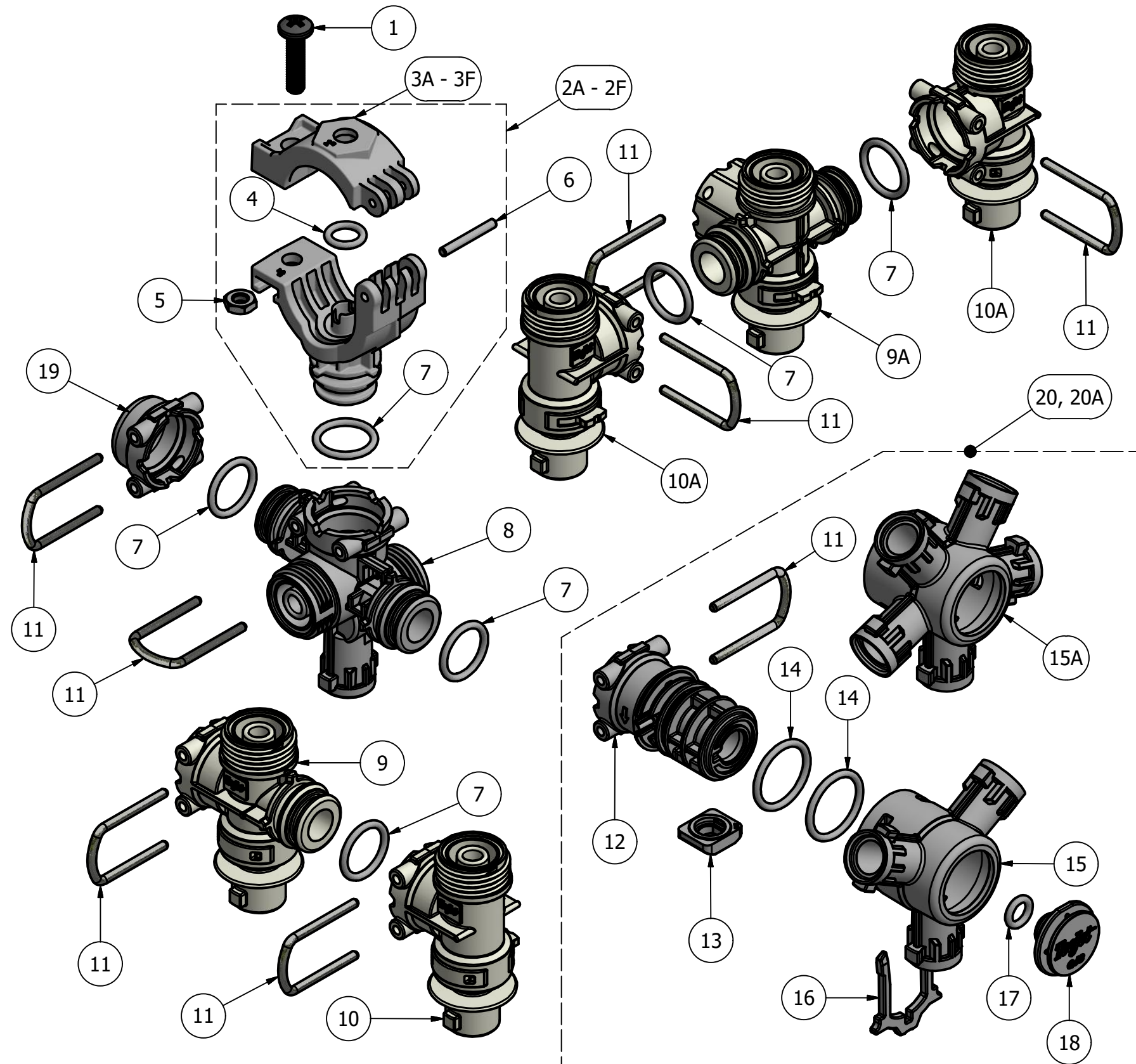


ITEM	PART NO.	DESCRIPTION
1	CP98523-SS	PAN HEAD SCREW, STAINLESS STEEL
2A	58576-20mm-NYB	20mm SIDE MOUNT SUB-ASSY., NYLON (BLACK)
2B	58576-25mm-NYB	25mm SIDE MOUNT SUB-ASSY., NYLON (BLACK)
2C	58576-28mm-NYB	28mm SIDE MOUNT SUB-ASSY., NYLON (BLACK)
2D	58576-1/2-NYB	1/2" SIDE MOUNT SUB-ASSY., NYLON (BLACK)
2E	58576-3/4-NYB	3/4" SIDE MOUNT SUB-ASSY., NYLON (BLACK)
2F	58576-1-NYB	1" SIDE MOUNT SUB-ASSY., NYLON (BLACK)
3A	CP58588-NYB	20mm UPPER CLAMP, NYLON (BLACK)
3B	CP58588-5-NYB	25mm UPPER CLAMP, NYLON (BLACK)
3C	CP58588-6-NYB	28mm UPPER CLAMP, NYLON (BLACK)
3D	CP58588-2-NYB	1/2" UPPER CLAMP, NYLON (BLACK)
3E	CP58588-3-NYB	3/4" UPPER CLAMP, NYLON (BLACK)
3F	CP58588-4-NYB	1" UPPER CLAMP, NYLON (BLACK)
4	CP7717-2/110-VI	O-RING, VITON (BROWN)
5	CP98522-SS	M6x10mm HEX NUT, STAINLESS STEEL
6	CP48256-SS	PIVOT PIN, STAINLESS STEEL
7	CP7717-2/115-VI	O-RING, VITON (BROWN)
8	CP116880-NYB	QJS-D MAIN BODY, NYLON (BLACK)
9	58573-NYB	MIDDLE OUTLET SUB-ASSY., NYLON (BLACK) (2 OUTLET)
9A	98519-NYB	TEE OUTLET SUB-ASSY., NYLON (BLACK) (3 OUTLET)
10	58566-NYB	END OUTLET SUB-ASSY., NYLON (BLACK) (1 OR 2 OUTLET)
10A	58566-1-NYB	END OUTLET SUB-ASSY., NYLON (BLACK) (3 OUTLET)
11	CP58457-304SS	RETAINING CLIP, STAINLESS STEEL
12	CP116881-NYB	QJS-D TURRET BODY, NYLON (BLACK)
13	CP114426-VI	SEAL, VITON (BROWN)
14	CP7717-2-118-VI	O-RING, VITON (BROWN)
15	CP114421-NYB	QJ370 3 OUTLET TURRET, NYLON (BLACK)
15A	CP114422-NYB	QJ370 5 OUTLET TURRET, NYLON (BLACK)
16	CP114424-NYB	QJ370 CLIP, NYLON (BLACK)
17	CP7717-2-109-VI	O-RING, VITON (BROWN)
18	CP114427-15-NYB	QJ370 PLUG, NYLON (BLACK)
19	CP114409-NYB	QJS-D END CAP, NYLON (BLACK)
20	116882-NYB	QJS-D 3 OUTLET TURRET SUB-ASSY., NYLON (BLACK)
20A	116883-NYB	QJS-D 5 OUTLET TURRET SUB-ASSY., NYLON (BLACK)



### CHEMSAVER® CHECK VALVE OPTIONS

- |                    |                  |                      |                    |
|--------------------|------------------|----------------------|--------------------|
| • E-CHEMSAVER      |                  | • AIR CHEMSAVER      |                    |
| 115880-4-12        | 12V SOLENOID     | 55300-1              | PNEUMATIC SHUTOFF  |
| 115880-4-24        | 24V SOLENOID     | CP58589-VI           | GASKET, VITON      |
| CP58589-VI         | GASKET, VITON    | CP7717-2/116         | O-RING, VITON      |
| • MANUAL CHEMSAVER |                  | • STANDARD CHEMSAVER |                    |
| 58140-NYB          | MANUAL SHUTOFF   | 58577                | 10 PSI CHECK VALVE |
| CP56709-VI         | DIAPHRAGM, VITON | CP56709-VI           | DIAPHRAGM, VITON   |

DESCRIPTION:  
QJS-D TURRET STYLE  
STACKABLE QUICK TEEJET®  
NOZZLE BODY



REVISION NO.	1	Parts List No.	PLQJS-D
REFERENCE:	09/06/2019	SHEET:	1 OF 1
		DWG SIZE:	B