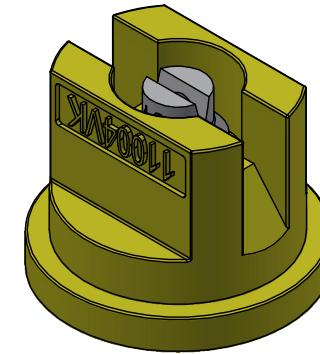


\*ADJUST SPRAY HEIGHT IN THE FIELD TO OVERLAP MINIMUM 30% OF EACH EDGE PATTERN

OPTIMUM SPRAY HEIGHT		
SPRAY ANGLE	50 CM TIP SPACING	75 CM TIP SPACING
80°	75 CM	N/A
110°	50 CM	75 CM

# XR TeeJet®

EXTENDED RANGE 80° AND 110° CERAMIC FLAT FAN SPRAY TIPS WITH *Viso Flo*® COLOR CODING



TIP COLOR	TIP NO. STRAINER (SCREEN SIZE)	LIQUID PRESSURE IN BAR	DROPLET SIZE		CAPACITY 1 NOZZLE IN L/MIN	LITERS PER HECTARE 50 CM NOZZLE SPACING				LITERS PER HECTARE 75 CM NOZZLE SPACING			
			80°	110°		8	10	12	14	8	10	12	14
YELLOW	XR11002-VK (50)	1.0		M	0.46	69.0	55.2	46.0	39.4	46.0	36.8	30.7	26.3
		1.5		F	0.56	84.0	67.2	56.0	48.0	56.0	44.8	37.3	32.0
		2.0		F	0.65	97.5	78.0	65.0	55.7	65.0	52.0	43.3	37.1
		3.0		F	0.79	119	94.8	79.0	67.7	79.0	63.2	52.7	45.1
		4.0		F	0.91	137	109	91.0	78.0	91.0	72.8	60.7	52.0
VIOLET	XR110025-VK (50)	1.0		M	0.57	85.5	68.4	57.0	48.9	57.0	45.6	38.0	32.6
		1.5		M	0.70	105	84.0	70.0	60.0	70.0	56.0	46.7	40.0
		2.0		F	0.81	122	97.2	81.0	69.4	81.0	64.8	54.0	46.3
		3.0		F	0.99	149	119	99.0	84.9	99.0	79.2	66.0	56.6
		4.0		F	1.14	171	137	114	97.7	114	91.2	76.0	65.1
BLUE	XR8003-VK XR11003-VK (50)	1.0	M	M	0.68	102	81.6	68.0	58.3	68.0	54.4	45.3	38.9
		1.5	M	M	0.83	125	99.6	83.0	71.1	83.0	66.4	55.3	47.4
		2.0	M	M	0.96	144	115	96.0	82.3	96.0	76.8	64.0	54.9
		3.0	F	F	1.18	177	142	118	101	118	94.4	78.7	67.4
		4.0	F	F	1.36	204	163	136	117	136	109	90.7	77.7
RED	XR8004-VK XR11004-VK (50)	1.0	C	M	0.91	137	109	91.0	78.0	91.0	72.8	60.7	52.0
		1.5	M	M	1.12	168	134	112	96.0	112	89.6	74.7	64.0
		2.0	M	M	1.29	194	155	129	111	129	103	86.0	73.7
		3.0	M	F	1.58	237	190	158	135	158	126	105	90.3
		4.0	F	F	1.82	273	218	182	156	182	146	121	104
BROWN	XR8005-VK XR11005-VK (50)	1.0	C	M	1.14	171	137	114	97.7	114	91.2	76.0	65.1
		1.5	C	M	1.39	209	167	139	119	139	111	92.7	79.4
		2.0	M	M	1.61	242	193	161	138	161	129	107	92.0
		3.0	M	F	1.97	296	236	197	169	197	158	131	113
		4.0	M	F	2.27	341	272	227	195	227	182	151	130
GRAY	XR8006-VK XR11006-VK (50)	1.0	C	C	1.37	206	164	137	117	137	110	91.3	78.3
		1.5	C	M	1.68	252	202	168	144	168	134	112	96.0
		2.0	M	M	1.94	291	233	194	166	194	155	129	111
		3.0	M	F	2.37	356	284	237	203	237	190	158	135
		4.0	M	F	2.74	411	329	274	235	274	219	183	157
WHITE	XR8008-VK XR11008-VK (50)	1.0	C	C	1.82	273	218	182	156	182	146	121	104
		1.5	C	C	2.23	335	268	223	191	223	178	149	127
		2.0	C	M	2.58	387	310	258	221	258	206	172	147
		3.0	M	M	3.16	474	379	316	271	316	253	211	181
		4.0	M	M	3.65	548	438	365	313	365	292	243	209

TABULATION BASED ON SPRAYING WATER AT 21°C. DATA IS BASED ON SPRAYING WATER UNDER LABORATORY CONDITIONS USING AN OXFORD LASER VISISIZER IMAGING ANALYZER (PDIA).

## FEATURES:

- POLYPROPYLENE BODY WITH CERAMIC ORIFICE INSERT.
- EXCELLENT CHEMICAL RESISTANCE AND SUPERIOR WEAR LIFE.
- TIP PRODUCES TAPERED EDGE FLAT FAN SPRAY PATTERN FOR UNIFORM COVERAGE IN BROADCAST SPRAYING.
- EXCELLENT SPRAY DISTRIBUTION OVER A WIDE RANGE OF PRESSURES.
- IDEAL FOR SPRAYERS EQUIPPED WITH AUTOMATIC CONTROLS.
- SUGGESTED SPRAY PRESSURE RANGE: 1 BAR TO 4 BAR (15-60 PSI).
- AUTOMATIC ALIGNMENT WITH 114441A-\*-CELR AND QUICK TEEJET CAP AND GASKET WITH VISIFLO COLOR CODING.
- REDUCES DRIFT AT LOWER PRESSURES, INCREASED COVERAGE AT HIGHER PRESSURES.

## TYPICAL APPLICATIONS

- RECOMMENDED FOR CONTACT HERBICIDES.

DESCRIPTION:  
LITERS PER HECTARE TABULATION  
FOR XR-VK TEEJET®  
FLAT SPRAY TIPS



REVISION NO.	2	Data Sheet No.	
REFERENCE:	03/03/26	DSXR-VK-METRIC	
SHEET:	1 OF 1	DWG SIZE:	B