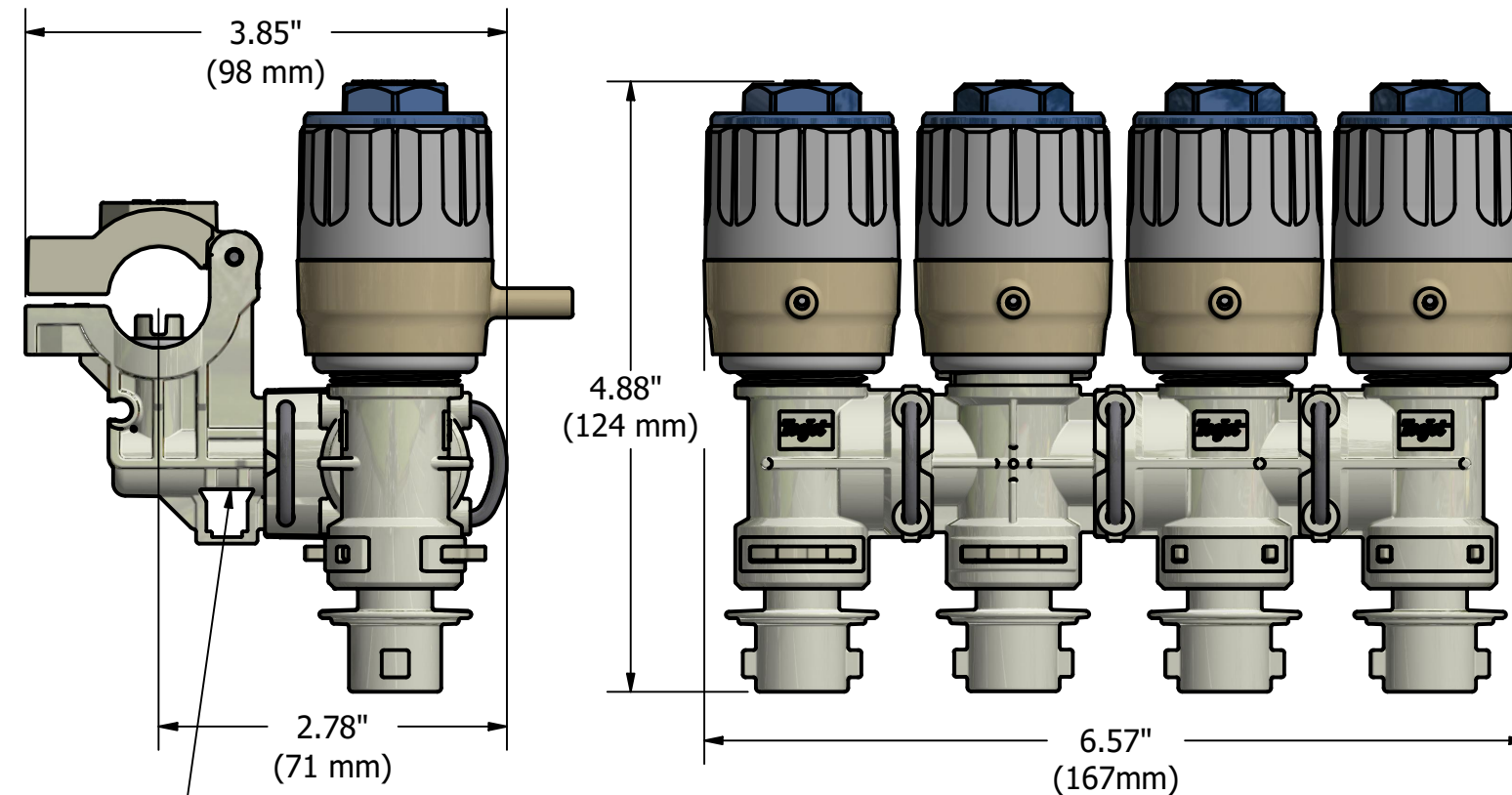
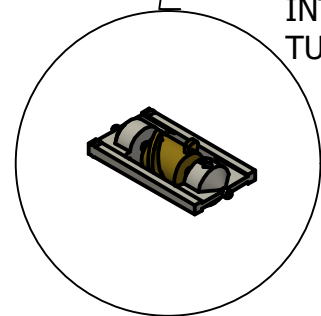


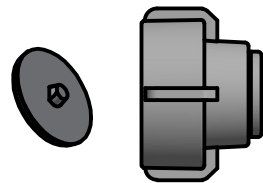
EXAMPLE P/N: QJS-N(F)4R-20mm-AAAA
 NOTE: SPECIFY CHEMSAVER® STARTING WITH OUTLET CLOSEST TO BOOM.



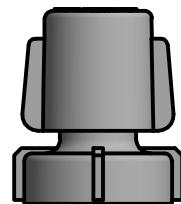
INTERNALLY-MOUNTED FLOW METER TURBINE ON QJS-F VERSIONS



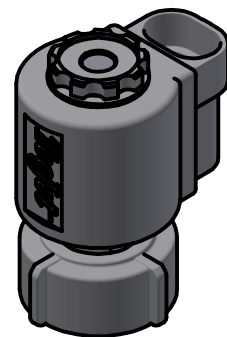
TEEJET CHEMSAVER® OPTIONS:



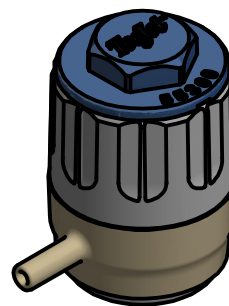
TEEJET DIAPHRAGM CHEMSAVER®
 PART NO. 58577
 DIAPHRAGM: CP56709-VI



TEEJET MANUAL CHEMSAVER®
 PART NO. 58140-NYB
 DIAPHRAGM: CP56709-VI



TEEJET e-CHEMSAVER®
 PART NO. 55295-4-12 or 55295-4-24
 SPECIAL GASKET: CP58589-VI




TEEJET AIR CHEMSAVER®
 PART NO. 55300
 SPECIAL GASKET: CP58589-VI

QJS- BOTTOM INLET STANDARD MOUNT W & W/O FLOW METER STACKABLE NOZZLE BODY FOR WET BOOMS

- * MULTIPLE OUTLET, UP TO FOUR OUTLETS ON BOTTOM INLET BODY.
 - * ORDER QJS-N FOR BOTTOM INLET STANDARD MOUNT W/O FLOW METER VERSION, QJS-F FOR BOTTOM INLET STANDARD MOUNT W/ FLOW METER VERSION.
 - * FLOW METER FOR USE WITH SENTRY 6140/6141 TIP FLOW MONITOR. TIP SENSOR P/N 16-00028 SOLD SEPERATELY. FOR MORE INFORMATION PLEASE REFER TO DS55299-1.
 - * AVAILABLE IN WET BOOM CONFIGURATIONS ONLY.
 - * MADE OF CORROSION RESISTANT MATERIALS.
 - * ATTACHES TO BOOM WITH M6-25mm STAINLESS STEEL PHILLIPS SCREW AND M6x1mm NUT WHICH IS FIXED INTO LOWER BODY CLAMP.
 - * STANDARD O-RINGS MADE OF VITON® .
 - * MAXIMUM OPERATING PRESSURE 300 PSI (20.7 BAR) W/O FLOW METER, 150 PSI (10.3 BAR) W/ FLOW METER.
 - * MAXIMUM FLOW RATING 2.75 GPM (10.4 L/MIN) AT 5 PSI (0.34 BAR) PRESSURE DROP, AND 4.0 GPM (15.1 L/MIN) AT 10 PSI (0.7 BAR) PRESSURE DROP PER OUTLET.
 - * FLOW METER FLOW RANGE: 0.15 GPM (0.6 L/MIN) TO 2.5 GPM (9.5 L/MIN).
 - * FEATURES QUICK TEEJET CAP CONNECTION.
 - * CAN BE EQUIPPED WITH MOST TEEJET CHEMSAVER® OPTIONS.
- NOTE: CHEMSAVER® OPTIONS DETAILED BELOW. FLOW RATES CAN BE FOUND ON THEIR CORRESPONDING DATA SHEETS.
- * MATERIALS: WETTED PARTS ARE NYLON AND VITON® .
- NOTE: DIFFERENT CHEMSAVER® OPTIONS INCLUDE EPDM, KYNAR®, NYLON AND VITON® . FLOW METER TURBINE IS ABS.
- * FITS WET BOOM SIZES: 20mm AND 25mm TUBING; 1/2", 3/4", AND 1" PIPE.
 - * 8MM HEX SOCKET ON UPPER CLAMP STANDARD; 6MM AVAILABLE.
 - * NOTE: FOR "HOW TO ORDER" INSTRUCTIONS PLEASE SEE DATA SHEET DS58585.

KYNAR® IS A REGISTERED TRADEMARK OF ARKEMA, INC.
 VITON® IS A REGISTERED TRADEMARK OF DUPONT PERFORMANCE ELASTOMERS, INC.

DESCRIPTION:
 QJS-N & QJS-F STACKABLE QUICK TEEJET® BOTTOM INLET STANDARD MOUNT W/ & W/O FLOW METER NOZZLE BODY ASSEMBLY

 Spraying Systems Co.® Spray Nozzles and Accessories P.O. Box 7900 - Wheaton, IL 60189-7900		REVISION NO.		DATA SHEET	
		REFERENCE: 10/14/24		DSQJS-N & F	
SHEET: 1 OF 1		DWG SIZE: B			