

SPECIFICATIONS:

- MAXIMUM PRESSURE RATING: 290 PSI (20 BAR)
- FLOW RATE: 10 GPM @ 5 PSI (37.0 L/MIN @ 0.34 BAR) PRESSURE DROP
- FLOW RATE: 14 GPM @ 10 PSI (53.0 L/MIN @ 0.68 BAR) PRESSURE DROP
- CURRENT DRAW: 0.5 A
- RESPONSE TIME: 0.7 SEC
- WETTED MATERIALS: POLYPROPYLENE, NYLON, STAINLESS STEEL, FKM
- HEIGHT: 9.3" (236 M); LENGTH: 7.1" (180 MM); WIDTH: 2.9" (73 MM)

FEATURES INCLUDE:

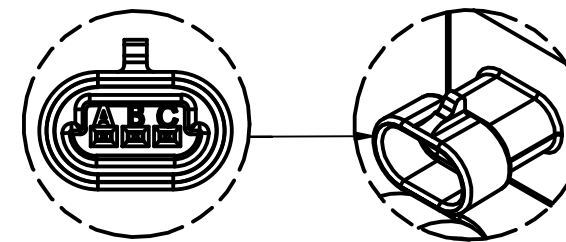
- MODULAR CLIPPED BODY ALLOWS FOR TOOL FREE ASSEMBLY OF VARIOUS ACCESSORIES AND MANIFOLD COMPONENTS
- REGULATED BYPASS FEATURE IMPROVES PRESSURE STABILITY WHEN BOOM SECTIONS ARE SWITCHED ON OR OFF
- GRADUATED BYPASS PORT IS ADJUSTED TO MATCH THE BOOM SECTION FLOW WHICH REDUCES SYSTEM PRESSURE SPIKES
- REGULATED BYPASS ALLOWS THE REGULATING VALVE TO MAINTAIN A MORE STABLE POSITION
- BYPASS PORT IS COMPATIBLE WITH EXISTING TEEJET® QUICK CONNECT FITTINGS
- SOLID STATE CIRCUIT BOARD WITH OPTICAL SWITCHING
- MOTOR HEAD SEALED TO IP69K
- CHOICE OF MINI-DIN, DEUTSCH OR METRI-PACK CONNECTOR
- QUICK RELEASE MOTOR HEAD ALLOWS FOR EASY FIELD INSPECTION
- RESETTABLE INTERNAL FUSE (DISCONNECT POWER FOR 20 SECONDS TO RESET)
- "EC" STYLE MOTOR COMPATIBLE WITH TEEJET AUTOMATIC BOOM SECTION CONTROLS
- "EC" STYLE MOTOR USES SINGLE POLE, SINGLE THROW SWITCH
- "E" STYLE MOTOR USES A DOUBLE POLE, DOUBLE THROW SWITCH
- OUTLET CONNECTIONS AVAILABLE IN STRAIGHT DIRECT HOSE BARBS AND QUICK CONNECT STRAIGHT OR 90° HOSE BARBS; REFER TO PL45529
- STAINLESS STEEL STEM PROVIDES EXCELLENT DURABILITY AND CHEMICAL RESISTANCE
- MOUNTING FEATURE REQUIRES M8 BOLT

ORDERING INFORMATION:

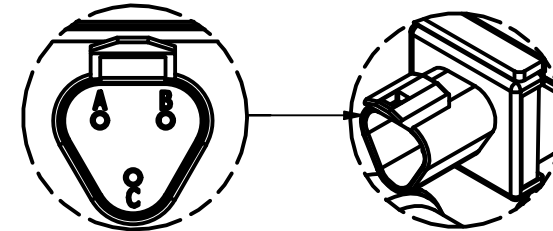
- C531AEC-3-D: CLIPPED 1 VALVE MANIFOLD, 3-WAY VALVE, MINI-DIN CABLE CONNECTION, SINGLE POLE SINGLE THROW
- C533AE-3-Q: CLIPPED 3 VALVE MANIFOLD, 3-WAY VALVE, DEUTSCH CONNECTION, DOUBLE POLE DOUBLE THROW
- C535AEC-3-P: CLIPPED 3 VALVE MANIFOLD, 3-WAY VALVE, METRI-PACK CONNECTION, SINGLE POLE SINGLE THROW

WIRING CHART FOR EC & E MOTORS					
MINI-DIN	METRI-PACK	DEUTSCH	WIRE COLOR	EC MOTOR	E MOTOR*
1	A	A	RED	CONSTANT +12VDC	+12VDC TO OPEN
3	B	B	WHITE	SWITCHED +12VDC	NOT USED
2	C	C	BLACK	GROUND	-12VDC TO OPEN

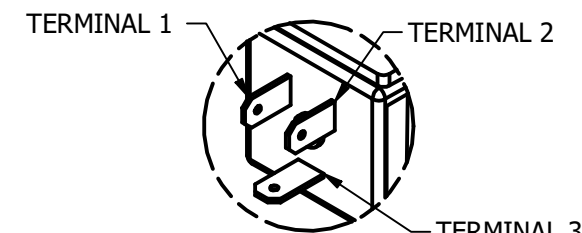
*FOR E MOTORS REVERSE POLARITY TO CLOSE; REQUIRES DPDT SWITCH



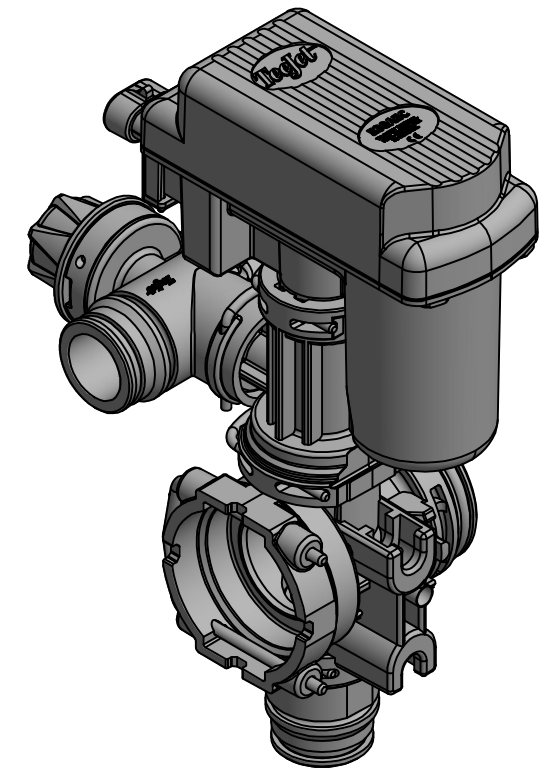
METRI-PACK CONNECTION



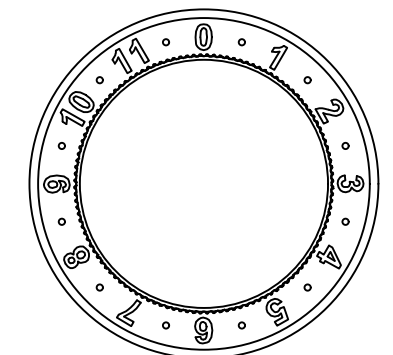
DEUTSCH CONNECTION



MINI-DIN CONNECTION



METERED BYPASS DIAL



OPERATING INFORMATION: ADJUSTING THE REGULATED BYPASS

- 1) ADJUST ALL METER BYPASS DIALS TO THE "ZERO" SETTING (TURN CLOCKWISE)
- 2) OPEN ALL SECTION VALVES, ALLOWING FLOW TO THE BOOM SECTIONS
- 3) NOTE THE CURRENT PRESSURE IN THE SYSTEM WITH ALL OF THE VALVE SECTIONS OPEN
- 4) TURN ONE VALVE SECTION OFF, ELIMINATING THE FLOW TO THAT BOOM SECTION
- 5) THIS SHOULD INCREASE THE PRESSURE IN YOUR SYSTEM. ADJUST THE BYPASS DIAL ON THE CLOSED VALVE SECTION UNTIL YOUR PRESSURE REFLECTS THE PRESSURE IN STEP 3
- 6) INDIVIDUALLY REPEAT STEP THREE THRU FIVE FOR ALL OF YOUR VALVE SECTIONS

DESCRIPTION: C530AEC AND C530AE 3-WAY CLIPPED DIRECT VALVE® ELECTRIC SHUT-OFF PLUNGER VALVE MANIFOLD			
REVISION NO.	1	Parts List No. DSC530AEC-3	
REFERENCE:	4/15/24	SHEET: 1 OF 1	DWG SIZE: B