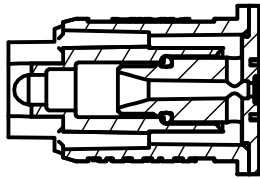


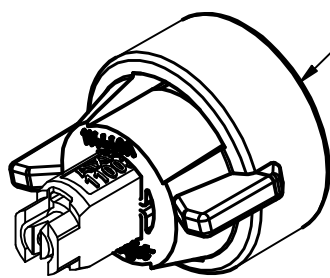
AIXR TeeJet®



AIXR110__VP SPRAY TIP
(CROSS SECTION VIEW)

FEATURES:

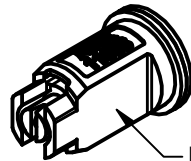
- TAPERED EDGE WIDE ANGLE FLAT SPRAY PATTERN FOR UNIFORM COVERAGE IN BROADCAST SPRAYING.
- PRE-ORIFICE FEATURES LARGE, ROUND, FREE PASSAGE TO MINIMIZE CLOGGING.
- LARGER DROPLETS ARE PRODUCED THROUGH THE USE OF A VENTURI AIR ASPIRATOR, RESULTING IN LESS DRIFT.
- SUGGESTED SPRAY PRESSURE RANGE: 15-90 PSI.
- UHMWPE (ULTRA-HIGH MOLECULAR WEIGHT POLYETHYLENE) CONSTRUCTION PROVIDES EXCELLENT CHEMICAL RESISTANCE, INCLUDING RESISTANCE TO ACIDS, AS WELL AS EXCEPTIONAL WEAR LIFE.
- AUTOMATIC SPRAY ALIGNMENT WITH 114441A-*-CELR QUICK TEEJET® CAP AND GASKET FOR CAPACITIES 015 THRU 06; 114443A-*-CELR FOR CAPACITIES 08 & 10.
ORDER AIXR110__VP-CE FOR TIP, CAP & GASKET COMBO.
*FILL IN COLOR CODE



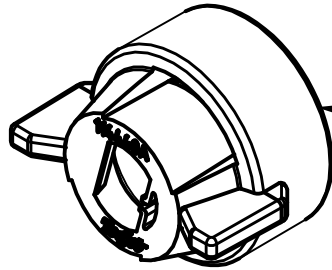
AIXR11003VP-CE TIP, CAP & GASKET ASSEMBLY
(AIXR11003-VP & 114441A-4-CELR)



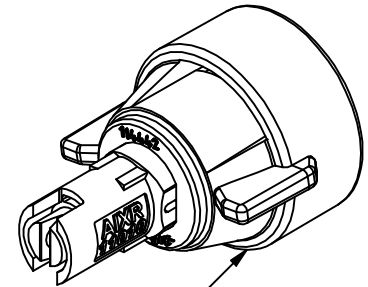
CP19438-EPR
SEAT GASKET (EPDM)
CP19438-VI
(VITON®-OPTIONAL)



LOCATING FLATS



CP114440A-*-CE
QUICK TEEJET® CAP (CELCON)
FOR 015-06 CAPACITIES
or
CP114442A-*-CE
QUICK TEEJET® CAP (CELCON)
FOR 08 & 10 CAPACITIES



AIXR11010VP-CE TIP, CAP & GASKET ASSEMBLY
(AIXR11010-VP & 114443A-11-CELR)

TIP INSTALLATION:

1. ALIGN LOCATING FLATS WITH CAP FLATS AND PRESS IN TIP UNTIL THE TIP BOTTOMS OUT.

DROPLET SIZE CATEGORIES				
M	C	VC	XC	UC
MEDIUM	COARSE	VERY COARSE	EXTREMELY COARSE	ULTRA COARSE

OPTIMUM SPRAY HEIGHT	
20" SPACING	30" SPACING
20"	30"

DROPLET SIZE CLASSIFICATIONS ARE BASED ON BCPC SPECIFICATIONS AND IN ACCORDANCE WITH ASABE STANDARD S-572.1 ON THE DATE OF PRINTING. CLASSIFICATIONS ARE SUBJECT TO CHANGE.

VITON® IS A TRADEMARK OF DUPONT DOW ELASTOMERS.

DESCRIPTION:

GALLONS PER ACRE
TABULATION FOR
AIXR110__VP TEEJET®
AIR INDUCTION EXTENDED RANGE
FLAT SPRAY TIP

TeeJet®
TECHNOLOGIES

REVISION NO.

4

REFERENCE:

1/9/2017

Data Sheet No.

DS63540

SHEET: 1 OF 3

DWG SIZE:

A

TIP COLOR VISIFLO	TIP No. STRAINER MESH SIZE	LIQUID PRESSURE (PSI)	DROPLET SIZE	CAPACITY ONE NOZZLE (GPM)	CAPACITY ONE NOZZLE (oz./min)	GALLONS PER ACRE 20" NOZZLE SPACING								GALLONS PER 1000 Sq. Ft. 20" NOZZLE SPACING			
						4	5	6	8	10	12	15	20	2	3	4	5
						MPH	MPH	MPH	MPH	MPH	MPH	MPH	MPH	MPH	MPH	MPH	MPH
ORANGE	11001-VP (100 MESH)	15	VC	0.061	7.8	4.5	3.6	3.0	2.3	1.8	1.5	1.2	0.91	0.21	0.14	0.10	0.08
		20	VC	0.071	9.1	5.3	4.2	3.5	2.6	2.1	1.8	1.4	1.1	0.24	0.16	0.12	0.10
		30	C	0.087	11	6.5	5.2	4.3	3.2	2.6	2.2	1.7	1.3	0.30	0.20	0.15	0.12
		40	C	0.10	13	7.4	5.9	5.0	3.7	3.0	2.5	2.0	1.5	0.34	0.23	0.17	0.14
		50	M	0.11	14	8.2	6.5	5.4	4.1	3.3	2.7	2.2	1.6	0.38	0.25	0.19	0.15
		60	M	0.12	15	8.9	7.1	5.9	4.5	3.6	3.0	2.4	1.8	0.41	0.27	0.20	0.16
		70	M	0.13	17	9.7	7.7	6.4	4.8	3.9	3.2	2.6	1.9	0.44	0.30	0.22	0.18
		80	M	0.14	18	10.4	8.3	6.9	5.2	4.2	3.5	2.8	2.1	0.48	0.32	0.24	0.19
		90	F	0.15	19	11.1	8.9	7.4	5.6	4.5	3.7	3.0	2.2	0.51	0.34	0.26	0.20
GREEN	110015-VP (100 MESH)	15	XC	0.092	12	6.8	5.5	4.6	3.4	2.7	2.3	1.8	1.4	0.31	0.21	0.16	0.13
		20	VC	0.11	14	8.2	6.5	5.4	4.1	3.3	2.7	2.2	1.6	0.37	0.25	0.19	0.15
		30	C	0.13	17	9.7	7.7	6.4	4.8	3.9	3.2	2.6	1.9	0.44	0.29	0.22	0.18
		40	C	0.15	19	11.1	8.9	7.4	5.6	4.5	3.7	3.0	2.2	0.51	0.34	0.26	0.20
		50	M	0.17	22	12.6	10.1	8.4	6.3	5.0	4.2	3.4	2.5	0.58	0.39	0.29	0.23
		60	M	0.18	23	13.4	10.7	8.9	6.7	5.3	4.5	3.6	2.7	0.61	0.41	0.31	0.24
		70	M	0.20	26	14.9	11.9	9.9	7.4	5.9	5.0	4.0	3.0	0.68	0.45	0.34	0.27
		80	M	0.21	27	15.6	12.5	10.4	7.8	6.2	5.2	4.2	3.1	0.71	0.48	0.36	0.29
		90	M	0.23	29	17.1	13.7	11.4	8.5	6.8	5.7	4.6	3.4	0.78	0.52	0.39	0.31
YELLOW	11002-VP (50 MESH)	15	XC	0.12	15	8.9	7.1	5.9	4.5	3.6	3.0	2.4	1.8	0.41	0.27	0.20	0.16
		20	VC	0.14	18	10.4	8.3	6.9	5.2	4.2	3.5	2.8	2.1	0.48	0.32	0.24	0.19
		30	VC	0.17	22	12.6	10.1	8.4	6.3	5.0	4.2	3.4	2.5	0.58	0.39	0.29	0.23
		40	C	0.20	26	14.9	11.9	9.9	7.4	5.9	5.0	4.0	3.0	0.68	0.45	0.34	0.27
		50	C	0.22	28	16.3	13.1	10.9	8.2	6.5	5.4	4.4	3.3	0.75	0.50	0.37	0.30
		60	M	0.24	31	17.8	14.3	11.9	8.9	7.1	5.9	4.8	3.6	0.82	0.54	0.41	0.33
		70	M	0.26	33	19.3	15.4	12.9	9.7	7.7	6.4	5.1	3.9	0.88	0.59	0.44	0.35
		80	M	0.28	36	21	16.6	13.9	10.4	8.3	6.9	5.5	4.2	0.95	0.63	0.48	0.38
		90	M	0.30	38	22	17.8	14.9	11.1	8.9	7.4	5.9	4.5	1.0	0.68	0.51	0.41
VIOLET	110025-VP (50 MESH)	15	XC	0.15	19	11.1	8.9	7.4	5.6	4.5	3.7	3.0	2.2	0.51	0.34	0.26	0.20
		20	XC	0.18	23	13.4	10.7	8.9	6.7	5.3	4.5	3.6	2.7	0.61	0.41	0.31	0.24
		30	VC	0.22	28	16.3	13.1	10.9	8.2	6.5	5.4	4.4	3.3	0.75	0.50	0.37	0.30
		40	VC	0.25	32	18.6	14.9	12.4	9.3	7.4	6.2	5.0	3.7	0.85	0.57	0.43	0.34
		50	C	0.28	36	21	16.6	13.9	10.4	8.3	6.9	5.5	4.2	0.95	0.63	0.48	0.38
		60	C	0.31	40	23	18.4	15.3	11.5	9.2	7.7	6.1	4.6	1.1	0.70	0.53	0.42
		70	C	0.33	42	25	19.6	16.3	12.3	9.8	8.2	6.5	4.9	1.1	0.75	0.56	0.45
		80	C	0.35	45	26	21	17.3	13.0	10.4	8.7	6.9	5.2	1.2	0.79	0.60	0.48
		90	M	0.38	49	28	23	18.8	14.1	11.3	9.4	7.5	5.6	1.3	0.86	0.65	0.52
BLUE	11003-VP (50 MESH)	15	XC	0.18	23	13.4	10.7	8.9	6.7	5.3	4.5	3.6	2.7	0.61	0.41	0.31	0.24
		20	XC	0.21	27	15.6	12.5	10.4	7.8	6.2	5.2	4.2	3.1	0.71	0.48	0.36	0.29
		30	VC	0.26	33	19.3	15.4	12.9	9.7	7.7	6.4	5.1	3.9	0.88	0.59	0.44	0.35
		40	VC	0.30	38	22	17.8	14.9	11.1	8.9	7.4	5.9	4.5	1.0	0.68	0.51	0.41
		50	C	0.34	44	25	20	16.8	12.6	10.1	8.4	6.7	5.0	1.2	0.77	0.58	0.46
		60	C	0.37	47	27	22	18.3	13.7	11.0	9.2	7.3	5.5	1.3	0.84	0.63	0.50
		70	C	0.40	51	30	24	19.8	14.9	11.9	9.9	7.9	5.9	1.4	0.91	0.68	0.54
		80	C	0.42	54	31	25	21	15.6	12.5	10.4	8.3	6.2	1.4	0.95	0.71	0.57
		90	M	0.45	58	33	27	22	16.7	13.4	11.1	8.9	6.7	1.5	1.0	0.77	0.61
RED	11004-VP (50 MESH)	15	UC	0.24	31	17.8	14.3	11.9	8.9	7.1	5.9	4.8	3.6	0.82	0.54	0.41	0.33
		20	XC	0.28	36	21	16.6	13.9	10.4	8.3	6.9	5.5	4.2	0.95	0.63	0.48	0.38
		30	XC	0.35	45	26	21	17.3	13.0	10.4	8.7	6.9	5.2	1.2	0.79	0.60	0.48
		40	VC	0.40	51	30	24	19.8	14.9	11.9	9.9	7.9	5.9	1.4	0.91	0.68	0.54
		50	VC	0.45	58	33	27	22	16.7	13.4	11.1	8.9	6.7	1.5	1.0	0.77	0.61
		60	VC	0.49	63	36	29	24	18.2	14.6	12.1	9.7	7.3	1.7	1.1	0.83	0.67
		70	C	0.53	68	39	31	26	19.7	15.7	13.1	10.5	7.9	1.8	1.2	0.90	0.72
		80	C	0.57	73	42	34	28	21	16.9	14.1	11.3	8.5	1.9	1.3	0.97	0.78
		90	C	0.60	77	45	36	30	22	17.8	14.9	11.9	8.9	2.0	1.4	1.0	0.82

DESCRIPTION:

**GALLONS PER ACRE
TABULATION FOR
AIXR110_VP TEEJET
AIR INDUCTION EXTENDED RANGE
FLAT SPRAY TIP**



REVISION NO.	4	Data Sheet No. DS63540
REFERENCE:	1/9/2017	
SHEET:	2 OF 3	DWG SIZE: A

TIP COLOR VISIFLO	TIP No. STRAINER MESH SIZE	LIQUID PRESSURE (PSI)	DROPLET SIZE	CAPACITY ONE NOZZLE (GPM)	CAPACITY ONE NOZZLE (oz./min)	GALLONS PER ACRE 20" NOZZLE SPACING								GALLONS PER 1000 Sq. Ft. 20" NOZZLE SPACING			
						4 MPH	5 MPH	6 MPH	8 MPH	10 MPH	12 MPH	15 MPH	20 MPH	2 MPH	3 MPH	4 MPH	5 MPH
GRAY	11006-VP (50 MESH)	15	UC	0.37	47	27	22	18.3	13.7	11.0	9.2	7.3	5.5	1.3	0.84	0.63	0.50
		20	XC	0.42	54	31	25	21	15.6	12.5	10.4	8.3	6.2	1.4	0.95	0.71	0.57
		30	XC	0.52	67	39	31	26	19.3	15.4	12.9	10.3	7.7	1.8	1.2	0.88	0.71
		40	VC	0.60	77	45	36	30	22	17.8	14.9	11.9	8.9	2.0	1.4	1.0	0.82
		50	VC	0.67	86	50	40	33	25	19.9	16.6	13.3	9.9	2.3	1.5	1.1	0.91
		60	VC	0.73	93	54	43	36	27	22	18.1	14.5	10.8	2.5	1.7	1.2	0.99
		70	VC	0.79	101	59	47	39	29	23	19.6	15.6	11.7	2.7	1.8	1.3	1.1
		80	C	0.85	109	63	50	42	32	25	21	16.8	12.6	2.9	1.9	1.5	1.2
		90	C	0.90	115	67	53	45	33	27	22	17.8	13.4	3.1	2.0	1.5	1.2
BROWN	11005-VP (50 MESH)	15	UC	0.31	40	23	18.4	15.3	11.5	9.2	7.7	6.1	4.6	1.1	0.70	0.53	0.42
		20	XC	0.35	45	26	21	17.3	13.0	10.4	8.7	6.9	5.2	1.2	0.79	0.60	0.48
		30	XC	0.43	55	32	26	21	16.0	12.8	10.6	8.5	6.4	1.5	0.97	0.73	0.58
		40	VC	0.50	64	37	30	25	18.6	14.9	12.4	9.9	7.4	1.7	1.1	0.85	0.68
		50	VC	0.56	72	42	33	28	21	16.6	13.9	11.1	8.3	1.9	1.3	0.95	0.76
		60	VC	0.61	78	45	36	30	23	18.1	15.1	12.1	9.1	2.1	1.4	1.0	0.83
		70	C	0.66	84	49	39	33	25	19.6	16.3	13.1	9.8	2.2	1.5	1.1	0.90
		80	C	0.71	91	53	42	35	26	21	17.6	14.1	10.5	2.4	1.6	1.2	0.97
		90	C	0.75	96	56	45	37	28	22	18.6	14.9	11.1	2.6	1.7	1.3	1.0
WHITE	11008-VP (50 MESH)	15	UC	0.49	63	36	29	24	18.2	14.6	12.1	9.7	7.3	1.7	1.1	0.83	0.67
		20	UC	0.57	73	42	34	28	21	16.9	14.1	11.3	8.5	1.9	1.3	0.97	0.78
		30	XC	0.69	88	51	41	34	26	20	17.1	13.7	10.2	2.3	1.6	1.2	0.94
		40	XC	0.80	102	59	48	40	30	24	19.8	15.8	11.9	2.7	1.8	1.4	1.1
		50	VC	0.89	114	66	53	44	33	26	22	17.6	13.2	3.0	2.0	1.5	1.2
		60	VC	0.98	125	73	58	49	36	29	24	19.4	14.6	3.3	2.2	1.7	1.3
		70	VC	1.06	136	79	63	52	39	31	26	21	15.7	3.6	2.4	1.8	1.4
		80	C	1.13	145	84	67	56	42	34	28	22	16.8	3.8	2.6	1.9	1.5
		90	C	1.20	154	89	71	59	45	36	30	24	17.8	4.1	2.7	2.0	1.6

DESCRIPTION:
**GALLONS PER ACRE
TABULATION FOR
AIXR110_VP TEEJET
AIR INDUCTION EXTENDED RANGE
FLAT SPRAY TIP**



REVISION NO.	4	Data Sheet No.	
REFERENCE:	1/9/2017	DS63540	
SHEET:	3 OF 3	DWG SIZE:	A