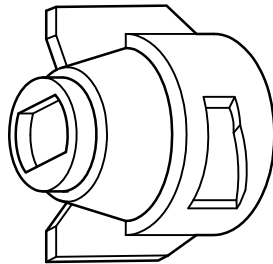


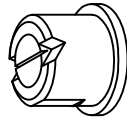
FEATURES:

- MATERIALS: CAP - NYLON
SEAT GASKET - EPDM
(VITON OPTIONAL)
- MAXIMUM PRESSURE - 300 PSI (20 bar)
- MAXIMUM TEMPERATURE - 100° F (38° C)
- DESIGNED FOR USE WITH ALBUZ FLAT SPRAY TIPS AND SPRAYING SYSTEMS Co. QUICK TEEJET® BODIES.

FOR USE WITH



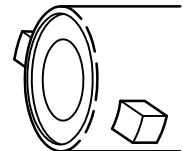
CP36540-NY
CAP NYLON



ALBUZ
FLAT SPRAY
TIP



CP19438-EPR
SEAT WASHER
(EPDM) OR (VITON OPTIONAL)



QUICK TEEJET
BODY

No. 36541-NYR (SET)

COLORS OF CAPS	COLOR CODE
GREY	1
RED	3
BLUE	4
GREEN	5
YELLOW	6

HOW TO ORDER:

FOR CAP AND SEAT GASKET SET, SPECIFY SET No. AND COLOR CODE
EXAMPLE: 36541-4-NYR

FOR CAP ONLY, SPECIFY PART No. AND COLOR CODE
EXAMPLE: CP36540-4-NY

FOR SEAT WASHER, SPECIFY PART No.
EXAMPLE: CP19438-EPR

* IF NO COLOR CODE IS SPECIFIED (i.e. 36541-NYR) GRAY WILL BE STANDARD.

DESCRIPTION:

**NO. 36541- -NYR
CAP AND SEAT GASKET SET**



Spraying Systems Co.®

**Spray Nozzles and Accessories
P.O. Box 7900 - Wheaton, Il. 60189-7900**

Rev. No. 1

Ref.

DATA SHEET

DS36541

SHEET OF