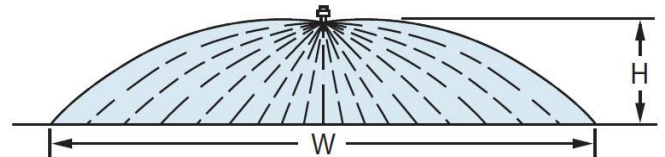
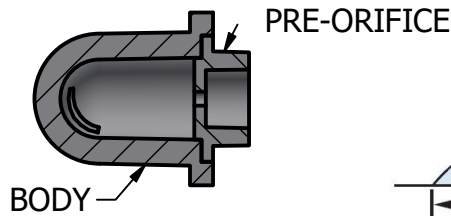
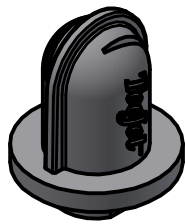
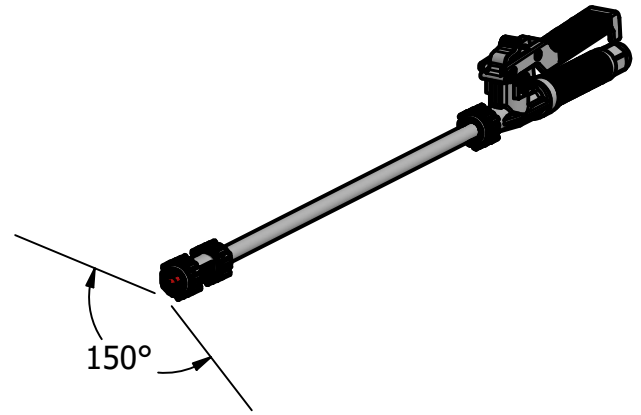


XE TeeJet[®] EXTENDED EVEN FLAT SPRAY TIP

FEATURES:

- EXTENDED WIDE ANGLE FOR ULTIMATE COVERAGE
- EVEN SPRAY PATTERN DESIGNED FOR USE IN HAND-HELD AND BOOMLESS SPRAYER APPLICATIONS
- ACETAL CONSTRUCTION FOR EXCELLENT CHEMICAL RESISTANCE
- PRODUCES DRIFT RESISTANT DROPLETS
- FITMENT IN CP114444A-*-CE QUICK TEEJET[®] CAP, CP8027-NYB NYLON THREADED CAP AND CP1325 BRASS THREADED CAP
- OPTIMAL SPRAY PRESSURE RANGE: 0.5-4 BAR
- REMOVABLE PRE-ORIFICE FOR CLEANING



TIP No. STRAINER MESH SIZE	BAR	DROP SIZE	CAPACITY ONE NOZZLE (l/min)	SPRAY WIDTH "W" (METERS)		HEIGHT "Y" = 60cm								HEIGHT "Y" = 90cm							
				60cm HEIGHT	90cm HEIGHT	l/ha FOR ONE NOZZLE								l/ha FOR ONE NOZZLE							
						4 km/h	5 km/h	6 km/h	8 km/h	10 km/h	12 km/h	15 km/h	20 km/h	4 km/h	5 km/h	6 km/h	8 km/h	10 km/h	12 km/h	15 km/h	20 km/h
XE15002 (50 MESH)	0.5	UC	0.32	1.2	1.4	40.2	32.2	26.8	20.1	16.1	13.4	10.7	8.0	34.5	27.6	23.0	17.2	13.8	11.5	9.2	6.9
	1	UC	0.46	1.7	2.3	40.2	32.1	26.8	20.1	16.1	13.4	10.7	8.0	29.7	23.8	19.8	14.8	11.9	9.9	7.9	5.9
	1.5	UC	0.56	2.2	2.8	38.0	30.4	25.4	19.0	15.2	12.7	10.1	7.6	29.9	23.9	19.9	14.9	12.0	10.0	8.0	6.0
	2	XC	0.64	2.7	3.4	35.8	28.6	23.9	17.9	14.3	11.9	9.5	7.2	28.4	22.7	18.9	14.2	11.4	9.5	7.6	5.7
	3	VC	0.79	3.3	4.2	35.9	28.7	23.9	17.9	14.3	12.0	9.6	7.2	28.2	22.5	18.8	14.1	11.3	9.4	7.5	5.6
XE15004 (50 MESH)	0.5	UC	0.70	1.6	1.9	65.6	52.5	43.7	32.8	26.2	21.9	17.5	13.1	55.3	44.2	36.8	27.6	22.1	18.4	14.7	11.1
	1	UC	0.96	2.5	3.0	57.4	46.0	38.3	28.7	23.0	19.1	15.3	11.5	47.9	38.3	31.9	23.9	19.1	16.0	12.8	9.6
	1.5	UC	1.15	3.2	3.9	53.9	43.1	35.9	27.0	21.6	18.0	14.4	10.8	44.2	35.4	29.5	22.1	17.7	14.7	11.8	8.8
	2	XC	1.31	3.7	4.5	53.1	42.5	35.4	26.5	21.2	17.7	14.2	10.6	43.7	34.9	29.1	21.8	17.5	14.6	11.6	8.7
	3	VC	1.57	4.3	5.0	54.9	43.9	36.6	27.4	21.9	18.3	14.6	11.0	47.2	37.8	31.5	23.6	18.9	15.7	12.6	9.4
XE15006 (50 MESH)	0.5	UC	0.97	2.1	2.7	69.0	55.2	46.0	34.5	27.6	23.0	18.4	13.8	53.7	43.0	35.8	26.8	21.5	17.9	14.3	10.7
	1	UC	1.37	3.0	3.8	68.3	54.7	45.6	34.2	27.3	22.8	18.2	13.7	54.0	43.2	36.0	27.0	21.6	18.0	14.4	10.8
	1.5	UC	1.67	3.6	4.2	69.8	55.8	46.5	34.9	27.9	23.3	18.6	14.0	59.8	47.8	39.9	29.9	23.9	19.9	15.9	12.0
	2	XC	1.93	4.2	4.6	69.0	55.2	46.0	34.5	27.6	23.0	18.4	13.8	63.0	50.4	42.0	31.5	25.2	21.0	16.8	12.6
	3	VC	2.37	4.7	5.2	75.6	60.5	50.4	37.8	30.2	25.2	20.2	15.1	68.3	54.6	45.5	34.2	27.3	22.8	18.2	13.7
XE15008 (50 MESH)	0.5	UC	1.30	2.3	2.7	84.7	67.8	56.5	42.4	33.9	28.2	22.6	16.9	72.2	57.7	48.1	36.1	28.9	24.1	19.2	14.4
	1	UC	1.83	3.2	3.9	85.9	68.7	57.3	42.9	34.4	28.6	22.9	17.2	70.5	56.4	47.0	35.2	28.2	23.5	18.8	14.1
	1.5	UC	2.24	3.6	4.3	93.3	74.7	62.2	46.7	37.3	31.1	24.9	18.7	78.1	62.5	52.1	39.1	31.3	26.0	20.8	15.6
	2	XC	2.58	3.9	4.7	99.4	79.5	66.2	49.7	39.7	33.1	26.5	19.9	82.5	66.0	55.0	41.2	33.0	27.5	22.0	16.5
	3	VC	3.16	4.4	4.9	107.7	86.1	71.8	53.8	43.1	35.9	28.7	21.5	96.7	77.4	64.5	48.3	38.7	32.2	25.8	19.3
4	C	3.64	4.6	5.1	118.8	95.0	79.2	59.4	47.5	39.6	31.7	23.8	107.1	85.7	71.4	53.6	42.9	35.7	28.6	21.4	

DROPLET SIZE CLASSIFICATIONS IN ACCORDANCE WITH ISO 25358 AT THE DATE OF PRINTING. CLASSIFICATIONS ARE SUBJECT TO CHANGE. APPLICATION RATES VARY BASED ON SPRAY WIDTH

DESCRIPTION:

**XE TEEJET[®]
LITERS PER HECTARE TABULATION**



REVISION NO.	2	Data Sheet No.	
REFERENCE:	6/27/23	DS116900M	
SHEET:	1 OF 1	DWG SIZE:	A