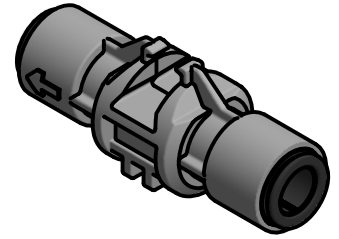


**FEATURES:**

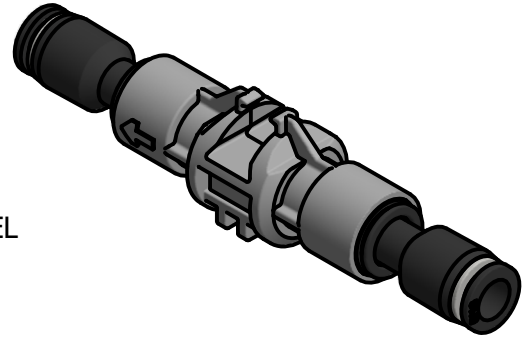
- USE WITH SENTRY 6140 OR SENTRY 6141 TIP FLOW MONITORS TO INDIVIDUALLY MONITOR FLOW PERFORMANCE AT EACH SPRAY TIP
- DETECTS FLOW VARIATION CAUSED BY CLOGS, NOZZLE DAMAGE OR LOSS, OR FLOW RESTRICTIONS



116260-375

**SPECIFICATIONS:**

- FLOW RANGE: 0.1 GPM (0.38 L/MIN) TO 2.5 GPM (9.5 L/MIN)
- MAXIMUM PRESSURE: 150 PSI (10 BAR)
- 3/8" (9.5 MM) HALF CARTRIDGE STANDARD;  
5/16" (8 MM) OR 1/4" (6.35) REDUCERS AVAILABLE

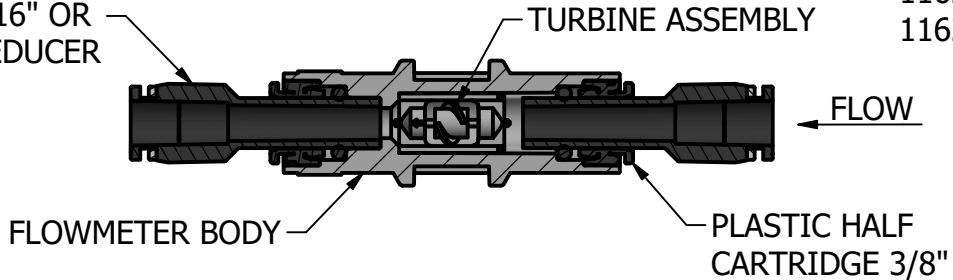


116260-312  
116260-250

**CONSTRUCTION MATERIALS:**

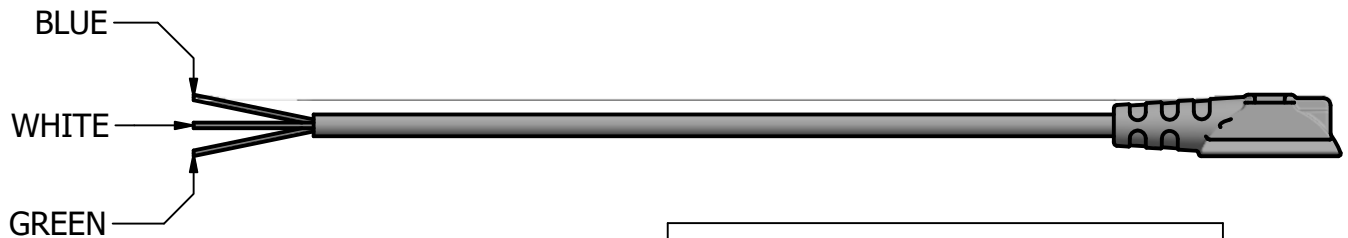
- TURBINE - POLYPROPYLENE, NYLON, 316 STAINLESS STEEL
- FLOWMETER BODY - NYLON

PTC 3/8" TO 5/16" OR  
3/8" TO 1/4" REDUCER



**ORDER SEPARATELY (IF NEEDED):**

TIP SENSOR: 16-00028 (18" CABLE TO BARE WIRE)



**TIP SENSOR INTERFACE:**

- VOLTAGE: 9-16VDC
- AMPERAGE: 50mA

WIRING CHART	
COLOR	WIRING
BLUE	(+) POSITIVE
WHITE	SIGNAL
GREEN	(-) NEGATIVE

**DESCRIPTION:**

116260-250, 116260-312, 116260-375  
PUSH-TO-CONNECT FLOWMETER



REVISION NO. 1

REFERENCE: 07/02/18

Data Sheet No.

**DS116260**

SHEET: 1 OF 1

DWG SIZE: A