

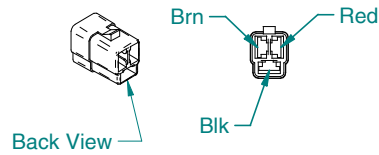
A

B

C

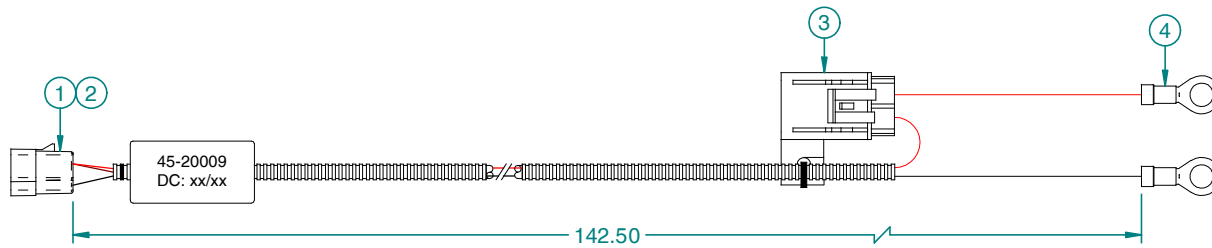
D

Item	Description	Part Number	QTY	U.M.
1	HOUSING, 3 POS., FEMALE SERIES 56	50-50002	1	EA
2	TERMINAL, FEMALE 10-12GA SERIES 56	50-50003	3	EA
3	FUSE, BLADE 15A	604-0014	1	EA
4	TERMINAL, RING 10-12ga 3/8"ID INSL	707-0023	2	EA



3 Pos. Male Housing Series 56 Packard

Color	Function
Red	Switched (+12v) Remote
Black	Ground
Brown	Constant (+12v) Console/Boom Valves



MATERIAL: N/A			
FINISH: N/A		TITLE: 38403-12 Commat Cable, Power 12'	
PROJECTION:	SCALE: 2:1	UNITS: X INCH METRIC: X	DRAWN BY: <i>Rayon Reiser</i>
UNLESS OTHERWISE SPECIFIED TOLERANCE:		CHECKED BY: <i>Ray Reiser</i>	
R2 3/18/03 01088-2	R1 9/30/98 38403-4	APPROVED BY: <i>Scott Leaker</i>	
R0 5/24/94 10576-D	REV. DATE	SHEET No: 1 of 2	DWG No: C-45-20009
Midwest Technologies IL, LLC. Claims proprietary right in the material disclosed herein. This document is not to be used in any way detrimental to the interest of Midwest Technologies IL, LLC.			

A

B

C

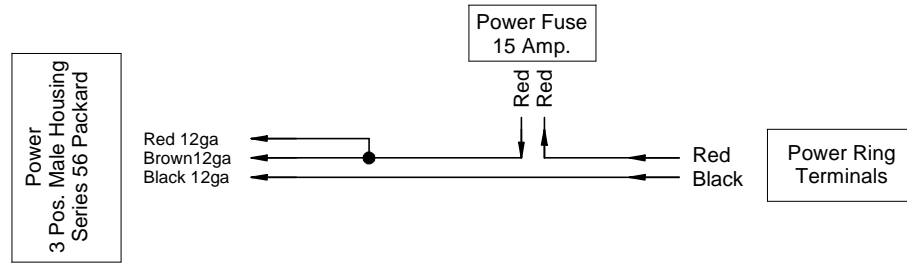
D



1

2

3

4



			MATERIAL: N/A			
			FINISH: N/A			
			PROJECTION: 		SCALE: UNITS: X INCH METRIC: n/a	
			UNLESS OTHERWISE SPECIFIED TOLERANCE:		DRAWN BY: <i>Rayan Reiser</i> CHECKED BY: <i>Ray Reiser</i>	
R2	3/18/03	01088-2			TITLE: 38403-12 Commat Cable, Power 12'	
R1	9/30/98	38403-4			APPROVED BY: <i>Scott Leaker</i>	
R0	5/24/94	10576-D			SHEET No: 2of2 DWG No: C-45-20009	
REV.	DATE	DOC. No				
Midwest Technologies IL, LLC. Claims proprietary right in the material disclosed hereon. This document is not to be used in any way detrimental to the interest of Midwest Technologies IL, LLC.						