

A

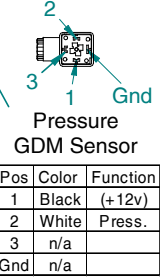
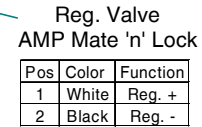
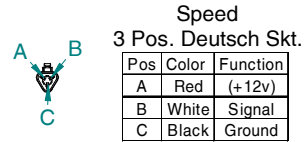
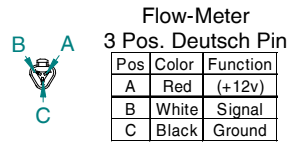
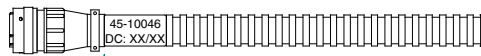
B

C

D

Framatone 28pos. Plug

Pos.	Color	Function	Pos.	Color	Function
A	n/a		R	White	Flow Meter Signal
B	White	(+12v) Boom 1 On	S	White	Pressure Signal
C	Brown	(+12v) Boom 2 On	T	White	Speed Signal
D	Green	(+12v) Boom 3 On	U	n/a	
E	Orange	(+12v) Boom 4 On	V	Red	(+12v) Flow, Pressure Speed
F	Blue	(+12v) Boom 5 On	W	n/a	
G	n/a		X	n/a	
H	n/a		Y	n/a	
J	n/a		Z	n/a	
K	n/a		a	White	Reg. Valve (+)
L	n/a		b	Black	Reg. Valve (-)
M	n/a		c	n/a	
N	n/a		d	Black	Gnd, Flow, Speed Boom Valves
P	n/a		e	Red	(+12v Boom Valves)

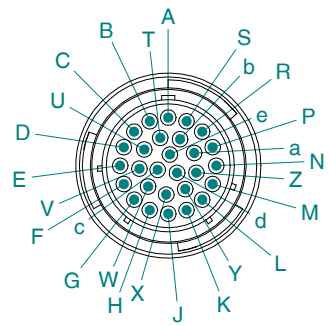


Booms Spade Terminals Female

Boom	Color
1	White
2	Brown
3	Green
4	Orange
5	Blue

Spade Terminals Male

Color	Function
Red	(+12v)
Black	Ground



Note: 1.0 All dimensions are displayed in "Inches" unless otherwise specified

MATERIAL: N/A		Midwest Technologies Illinois	
FINISH: N/A		TITLE: Harness, Rear w/o Power, Spraylink	
PROJECTION:		SCALE: UNITS: X INCH METRIC: X	DRAWN BY: Bryan Reiser
UNLESS OTHERWISE SPECIFIED TOLERANCE:		CHECKED BY: Amy Neuberger	
REV. DATE	DOC. No.	SHEET No: 1 of 2	DWG No: C-45-10046
<small>Midwest Technologies IL, LLC. Claims proprietary right in the material disclosed hereon. This document is not to be used in any way detrimental to the interest of Midwest Technologies IL, LLC.</small>			

1

2

3

4

A

B

C

D

1

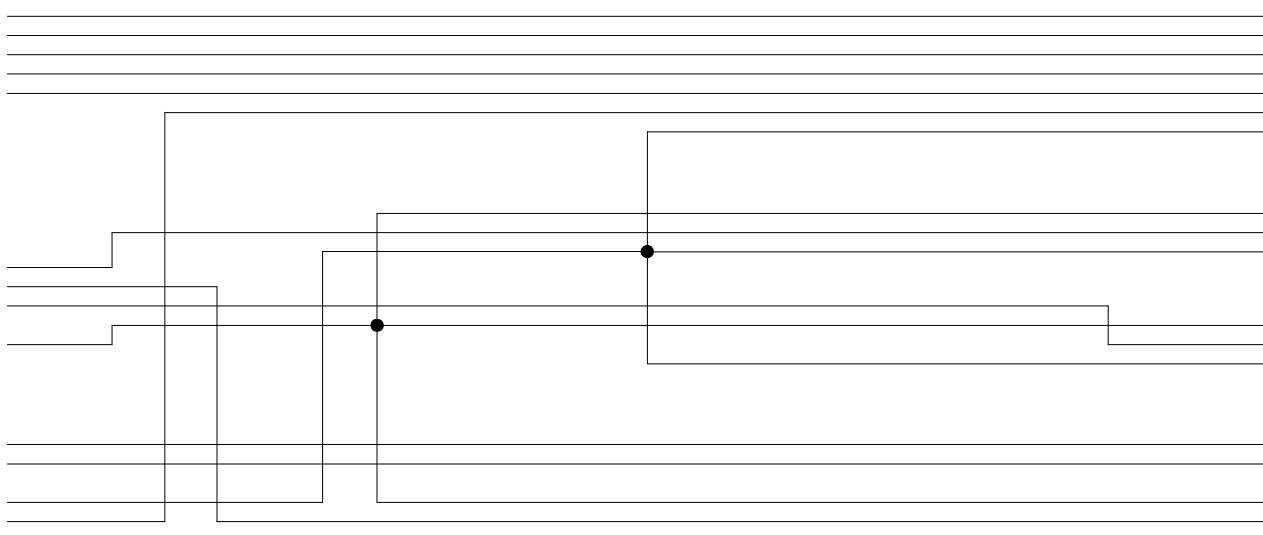
2

3

4

Framatone Plug
28 pos. w/Sockets

- A n/a
- B White 18ga
- C Brown 18ga
- D Green 18ga
- E Orange 18ga
- F Blue 18ga
- G n/a
- H n/a
- J n/a
- K n/a
- L n/a
- M n/a
- N n/a
- P n/a
- R White 18ga
- S White 18ga
- T White 18ga
- U n/a
- V Red 18ga
- W n/a
- X n/a
- Y n/a
- Z n/a
- a White 18ga
- b Black 18ga
- c n/a
- d Black 18ga
- e Red 18ga



- White B1
- Brown B2
- Green B3 Boom Terminals
- Orange B4 1-5 Booms w/+V & Gnd
- Blue B5 Female Spade Terminals
- Red B+V
- Black B Gnd

- Red A Flow-Meter
- White B 3pos. Deutsch
- Black C Shroud w/Pins

- Red A Speed
- White B 3pos. Deutsch
- Black C Plug w/ Skt

- White 1 Reg. Valve
- Black 2 AMP Mate 'n' Lock

- Black 1
- White 2 Pressure
- n/a 3 GDM Sensor
- n/a Gnd

MATERIAL: N/A				
FINISH: N/A				TITLE: Harness, Rear w/o Power, Spraylink
PROJECTION:		SCALE: UNITS: X INCH METRIC: 1:4	DRAWN BY: Bryan Reiser	
UNLESS OTHERWISE SPECIFIED TOLERANCE:		CHECKED BY: Amy Hudson		
R0 6/0104 01040-1		APPROVED BY:		
REV. DATE	NOC. No	0-1" +/- .1"	10-60" +/- .1"	XX .02
		1-5" +/- .25"	60-120" +/- .2"	XXX .005
		5-10" +/- .5"	120" +/- .3"	X 12
		SHEET No: 2of2		DWG No: C-45-10046
Midwest Technologies IL, LLC. Claims proprietary right in the material disclosed hereon. This document is not to be used in any way detrimental to the interest of Midwest Technologies IL, LLC.				