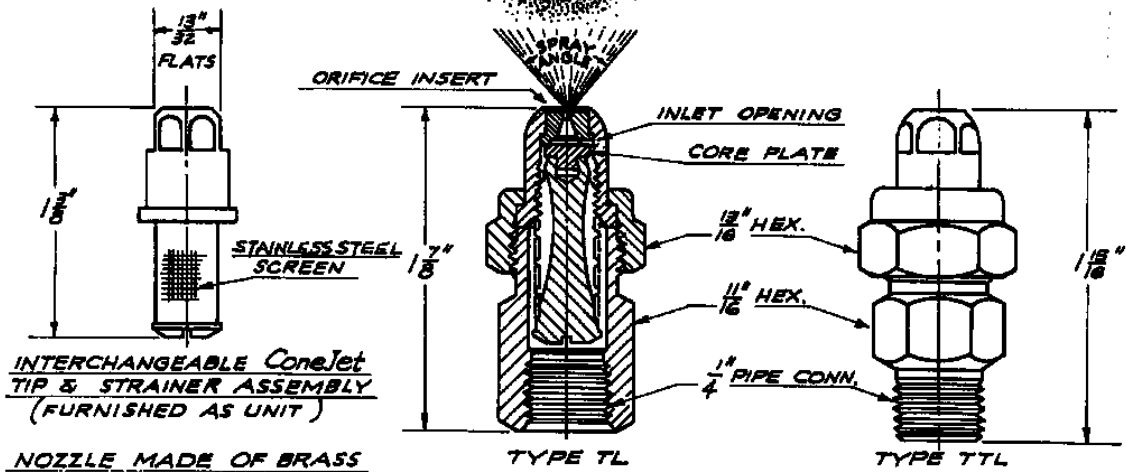


CONE  
SPRAY PATTERN

THIS NOZZLE CAN ALSO BE SUPPLIED  
WITH A STANDARD TEEJET STRAINER  
AS SHOWN ON DATA SHEET 5200-X.



NOZZLE NO.		INLET OPENINGS	ORI-FICE DIA.	MESH OF SCREEN	CAPACITY IN G.P.H. (Gallons Per Hour) & SPRAY ANGLE AT p.s.i. (Lbs. per square inch)												
TYPE T FEMALE CONN.	TYPE TT MALE CONN.				15	20	25	30	40	60	80	100	150	200	300	400	
1/4 TLX1	1/4 TTLX1	ONE .016X.015	.020"	100					.89 38°	1.0 54°	1.2 71°	1.5 80°	1.5 83°	1.7 85°	1.9 85°	2.3 86°	2.6 86°
1/4 TLX1.25	1/4 TTLX1.25	ONE .020X.020	.022"	100					1.1 45°	1.25 58°	1.5 72°	1.7 80°	1.9 83°	2.2 85°	2.4 86°	2.9 86°	3.3 87°
1/4 TLX1.5	1/4 TTLX1.5	ONE .024X.020	.024"	100					1.2 45°	1.3 52°	1.5 63°	1.8 74°	2.0 80°	2.2 83°	2.5 85°	2.9 86°	3.3 86°
1/4 TLX2	1/4 TTLX2	ONE .028X.024	.028"	100		1.5 40°	1.6 53°	1.8 60°	2.0 68°	2.4 75°	2.7 80°	3.0 83°	3.6 85°	4.0 85°	4.8 85°	5.5 85°	6.5 85°
1/4 TLX2.5	1/4 TTLX2.5	ONE .030X.025	.031"	100		1.8 48°	2.0 59°	2.2 64°	2.5 70°	3.0 75°	3.4 77°	3.7 80°	4.4 82°	5.0 83°	6.0 84°	7.0 84°	8.4 84°
1/4 TLX3	1/4 TTLX3	ONE .036X.024	.034"	100	2.0 38°	2.2 57°	2.4 68°	2.6 68°	3.0 72°	3.4 76°	4.1 78°	4.5 80°	5.2 82°	6.1 83°	7.2 83°	8.5 83°	10.0 83°
1/4 TLX4	1/4 TTLX4	ONE .040X.024	.041"	50	2.6 48°	2.9 61°	3.2 67°	3.5 70°	4.0 75°	4.5 77°	5.5 80°	6.1 81°	7.3 82°	8.3 82°	10.0 82°	11.4 82°	14.0 82°
1/4 TLX5	1/4 TTLX5	TWO .032X.032	.044"	50	3.2 53°	3.6 63°	4.0 68°	4.4 70°	5.0 75°	6.0 77°	6.9 79°	7.6 80°	9.1 81°	10.4 81°	12.5 81°	14.3 81°	17.1 81°
1/4 TLX6	1/4 TTLX6	TWO .040X.032	.047"	50	3.2 60°	4.4 65°	4.8 69°	5.3 71°	6.0 74°	7.2 77°	8.2 78°	9.1 80°	11.0 80°	12.3 80°	15.0 80°	17.1 80°	20.0 80°
1/4 TLX8	1/4 TTLX8	TWO .040X.036	.055"	50	3.0 60°	5.7 66°	6.4 70°	7.0 71°	8.0 74°	9.7 77°	11.1 78°	12.4 80°	15.0 80°	17.3 80°	21 80°	24 80°	29 80°
1/4 TLX10	1/4 TTLX10	TWO .050X.030	.060"	50	6.3 68°	7.2 68°	8.0 71°	8.7 72°	10.0 75°	12.1 75°	13.3 75°	15.3 80°	18.8 80°	21.6 80°	26.2 80°	30.1 80°	36.1 80°
1/4 TLX12	1/4 TTLX12	TWO .050X.034	.067"	50	7.5 65°	8.6 69°	9.6 72°	10.5 73°	12.0 75°	14.6 75°	16.7 78°	18.6 80°	22.6 80°	25.9 80°	31.4 80°	36.1 80°	43.3 80°
1/4 TLX14	1/4 TTLX14	TWO .053X.034	.070"	50	8.6 66°	9.9 70°	11.1 73°	12.1 74°	14.0 75°	17.1 75°	19.7 78°	22.1 79°	27 80°	31.1 80°	38 80°	45.9 80°	55.9 80°
1/4 TLX18	1/4 TTLX18	TWO .060X.031	.078"	50	11.7 68°	12.8 71°	14.3 74°	15.6 75°	18.0 77°	22.0 78°	25.4 79°	28.4 80°	34.7 80°	40.0 80°	48.9 80°	58.4 80°	71.1 80°
1/4 TLX22	1/4 TTLX22	TWO .065X.030	.086"	50	13.5 65°	15.6 71°	17.4 74°	18.1 75°	22.0 75°	26.9 75°	31.0 78°	34.7 80°	42.4 80°	48.5 80°	59.3 80°	70.3 80°	85.3 80°
1/4 TLX26	1/4 TTLX26	TWO .065X.030	.094"	50	16.0 69°	18.4 72°	20.6 75°	22.5 76°	26.0 78°	31.8 79°	36.7 80°	41.0 80°	50.1 80°	57.8 80°	70.6 80°	81.5 80°	99.3 80°

TABULATION IS BASED ON WATER AT TEMPERATURE OF 70° F.  
FOR SPRAYING WATER WITH WETTING AGENT SEE DATA SHEET 5402-X.

DESCRIPTION:

1/4 TLX-- AND 1/4 TTLX--  
TEEJET SPRAY NOZZLES  
WITH CONEJET TIPS  
"LX" SERIES  
(80 DEGREE SPRAY ANGLE  
AT 100 PSI)



**Spraying Systems Co.**

Spray Nozzles and Accessories  
P.O. Box 7900 - Wheaton, IL 60189-7900

Rev. No.

Ref.

Data Sheet No.

**5202-X**

SHEET OF