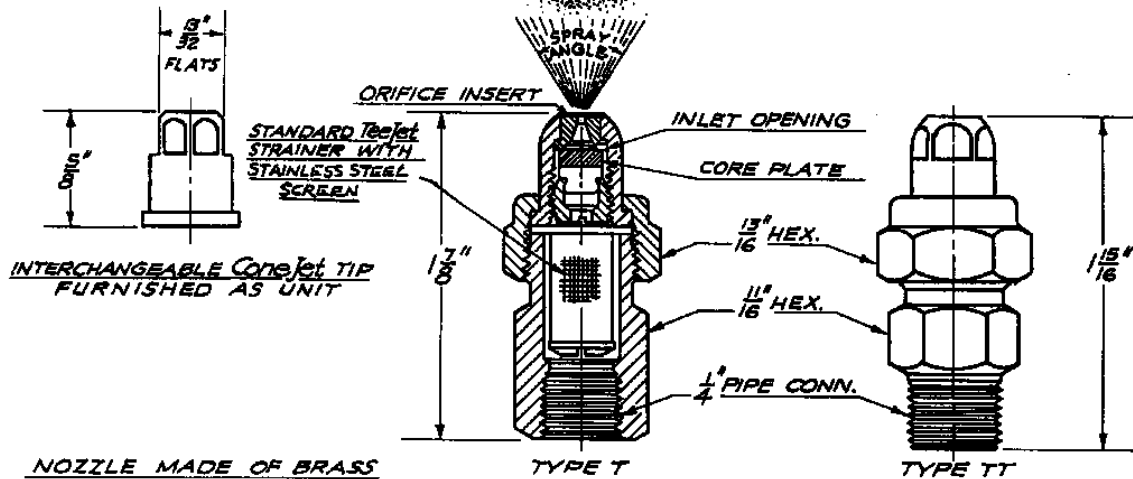


**CONE
SPRAY PATTERN**

THIS NOZZLE CAN ALSO BE SUPPLIED WITH A STRAINER BUILT INTO THE INTERCHANGEABLE ConeJet TIP AS SHOWN ON DATA SHEET 5202-Y



NOZZLE NO. TYPE T FEMALE CONN	NOZZLE NO. TYPE TT MALE CONN.	INLET OPENINGS	ORI- FICE DIA.	MESH OF SCREEN	CAPACITY IN G.P.H. (Gallons Per Hour) & SPRAY ANGLE AT p.s.i. (Lbs. per square inch)												
					15	20	25	30	40	60	80	100	150	200	300	400	
1/4 T Y.60	1/4 TT Y.60	ONE .012" X .010"	.014"	200								.80 53°	.88 65°	1.0 71°	1.2 74°	1.4 76°	1.6 79°
1/4 T Y 1	1/4 TT Y 1	ONE .020 X .018"	.016"	100					1.0 35°	1.2 52°	1.3 61°	1.5 66°	1.7 68°	1.9 71°	2.3 73°	2.6 76°	3.0 78°
1/4 T Y 1.25	1/4 TT Y 1.25	ONE .024 X .020"	.018"	100					1.1 30°	1.25 43°	1.5 56°	1.7 61°	1.8 65°	2.2 68°	2.4 70°	2.9 74°	3.2 75°
1/4 T Y 1.5	1/4 TT Y 1.5	ONE .024 X .024"	.021"	100					1.2 31°	1.3 41°	1.5 51°	1.8 58°	2.0 62°	2.2 65°	2.6 68°	2.9 72°	3.3 75°
1/4 T Y 2	1/4 TT Y 2	ONE .032 X .029"	.025"	100		1.5 39°	1.6 46°	1.8 50°	2.0 55°	2.4 60°	2.7 63°	3.0 65°	3.6 67°	5.0 69°	5.6 71°	6.0 71°	7.2 72°
1/4 T Y 2.5	1/4 TT Y 2.5	ONE .040 X .036"	.028"	100		1.8 41°	2.0 47°	2.2 51°	2.5 56°	3.0 60°	3.4 63°	3.7 65°	4.4 67°	5.0 69°	5.6 71°	6.0 71°	6.8 72°
1/4 T Y 3	1/4 TT Y 3	TWO .032 X .028"	.030"	100		2.2 43°	2.4 48°	2.6 52°	3.0 57°	3.6 61°	4.1 63°	4.5 65°	5.3 67°	6.1 69°	6.9 70°	7.2 71°	8.2 71°
1/4 T Y 4	1/4 TT Y 4	TWO .040 X .032"	.033"	50		2.9 46°	3.2 51°	3.5 54°	4.0 58°	4.6 62°	5.5 64°	6.1 65°	7.3 67°	8.3 68°	10.0 69°	11.4 70°	14.4 70°
1/4 T Y 5	1/4 TT Y 5	TWO .040 X .034"	.037"	50	3.2 35°	3.6 46°	4.0 52°	4.4 55°	5.0 59°	6.0 62°	6.9 64°	7.6 65°	9.1 67°	10.4 68°	12.5 69°	14.3 70°	17.3 70°
1/4 T Y 6	1/4 TT Y 6	TWO .036 X .040"	.041"	50	3.8 38°	4.4 50°	4.8 54°	5.3 57°	6.0 60°	7.2 63°	8.2 64°	9.1 65°	11.0 67°	12.5 68°	15.0 69°	17.1 69°	21.6 69°
1/4 T Y 8	1/4 TT Y 8	TWO .050 X .031"	.047"	50	5.0 42°	5.7 51°	6.4 55°	7.0 57°	8.0 60°	9.7 62°	11.1 63°	12.4 64°	15.0 65°	17.9 66°	21.0 67°	24.0 67°	29.0 67°
1/4 T Y 10	1/4 TT Y 10	TWO .050 X .035"	.050"	50	6.3 45°	7.2 53°	8.0 56°	8.7 58°	10.0 61°	12.1 63°	13.9 64°	15.5 65°	18.8 66°	21.6 67°	26.2 68°	30.1 68°	36.0 68°
1/4 T Y 12	1/4 TT Y 12	TWO .060 X .030"	.057"	50	7.5 49°	8.6 54°	9.6 57°	10.5 59°	12.0 62°	14.6 63°	16.7 64°	18.6 65°	22.6 66°	25.9 66°	31.4 67°	36.1 67°	43.0 67°
1/4 T Y 14	1/4 TT Y 14	TWO .060 X .033"	.059"	50	8.6 50°	9.9 54°	11.1 57°	12.1 59°	14.0 62°	17.1 63°	19.7 64°	22.1 65°	27.0 66°	31.1 66°	35.0 66°	43.0 66°	49.0 66°
1/4 T Y 18	1/4 TT Y 18	TWO .070 X .030"	.067"	50	11.1 51°	12.8 55°	14.3 58°	15.6 60°	18.0 63°	22.0 64°	25.4 65°	28.4 65°	34.7 66°	40.0 66°	48.0 66°	56.0 66°	64.0 66°
1/4 T Y 22	1/4 TT Y 22	TWO .075 X .030"	.073"	50	13.5 53°	15.6 56°	17.4 58°	18.1 60°	22.0 63°	26.9 64°	31.0 65°	34.7 65°	42.4 66°	49.0 66°	58.0 66°	68.0 66°	80.0 66°
1/4 T Y 26	1/4 TT Y 26	TWO .075 X .034"	.081"	50	16.0 53°	18.4 60°	20.6 61°	22.5 62°	26.0 63°	31.8 64°	36.7 65°	41.0 65°	50.1 65°	57.8 65°	70.6 65°	81.5 65°	95.0 65°

TABULATION IS BASED ON WATER AT TEMPERATURE OF 70° F.
FOR SPRAYING WATER WITH WETTING AGENT SEE DATA SHEET 5400-Y

DESCRIPTION:

1/4 TY-- AND 1/4 TTY--
TEEJET SPRAY NOZZLES
WITH CONEJET TIPS
"Y" SERIES
(65 DEGREE SPRAY ANGLE
AT 100 PSI)



Spraying Systems Co.®

Spray Nozzles and Accessories
P.O. Box 7900 - Wheaton, Il. 60189-7900

Rev. No.

Ref.

Data Sheet No.

5200-Y

SHEET OF