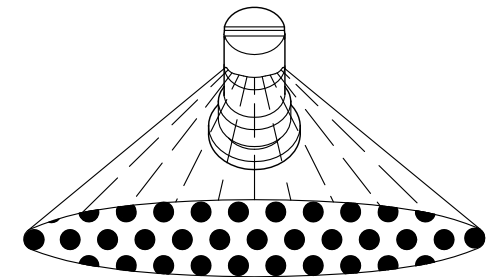
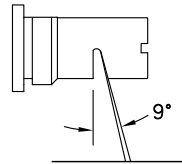
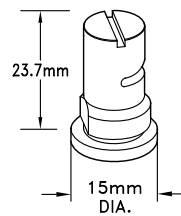


TFW TURBO **FloodJet®**  
EXTRA WIDE ANGLE FLAT SPRAY TIPS

U.S. PATENT NO. 4828182, 5190222, 5275340

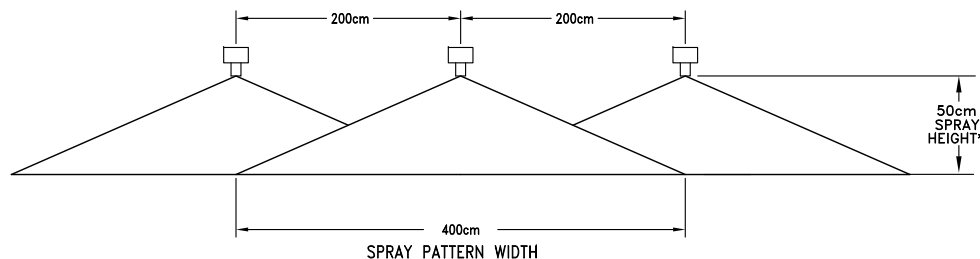


EXTRA WIDE ANGLE SPRAY WITH  
TAPERED EDGE PATTERN

Tip No.	Liquid Pressure In Bar	Capacity 1 Nozzle In l/min	Liters Per Hectare - 200 cm Spacing											
			4 km/h	5 km/h	6 km/h	7 km/h	8 km/h	9 km/h	10 km/h	12 km/h	16 km/h	20 km/h	25 km/h	30 km/h
TFW-12	1.5	3.35	251	201	168	144	126	112	101	83.8	62.8	50.3	40.2	33.5
	2.0	3.87	290	232	194	166	145	129	116	96.8	72.6	58.1	46.4	38.7
	2.5	4.33	325	260	216	185	162	144	130	108	81.1	64.9	51.9	43.3
	3.0	4.74	356	284	237	203	178	158	142	119	88.9	71.1	56.9	47.4
	3.5	5.12	384	307	256	219	192	171	154	128	96.0	76.8	61.4	51.2
TFW-20	1.5	5.58	418	335	279	239	209	186	167	139	105	83.7	66.9	55.8
	2.0	6.44	483	387	322	276	242	215	193	161	121	96.6	77.3	64.4
	2.5	7.20	540	432	360	309	270	240	216	180	135	108	86.4	72.0
	3.0	7.89	592	473	395	338	296	263	237	197	148	118	94.7	78.9
	3.5	8.52	639	511	426	365	320	284	256	213	160	128	102	85.2

FEATURES:

- EXCELLENT SPRAY DISTRIBUTION QUALITY.
- EXTRA WIDE SPRAY PATTERN ALLOWS TIP TO BE USED FOR BOOMLESS SPRAY APPLICATIONS.
- IDEAL TIP FOR RESIDENTIAL AND ESTATE SPRAYERS.
- SINGLE TIP PROVIDES A 400 cm SPRAY PATTERN WIDTH.
- LARGE ORIFICE REDUCES LIKELIHOOD OF CLOGGING.
- RECOMMENDED OPERATING PRESSURE RANGE: 1.5-3.5 bar.
- ALL BRASS CONSTRUCTION.
- CAN BE USED WITH No. CP25599--NY QUICK TEEJET® CAP FOR AUTOMATIC ALIGNMENT.



\*SPRAY HEIGHT MAY REQUIRE ADJUSTMENT TO PROVIDE A SUGGESTED DOUBLE OVERLAP CONDITION.

DESCRIPTION:  
TFW TURBO FLOODJET®  
EXTRA WIDE ANGLE  
FLAT SPRAY TIP  
(METRIC)



**Spraying Systems Co.®**  
Spray Nozzles and Accessories  
P.O. Box 7900 - Wheaton, Il. 60189-7900

Rev. No. 1

Ref.

DATA SHEET

50142M

SHEET OF