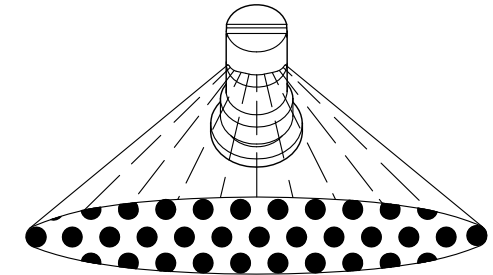
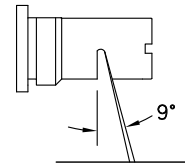
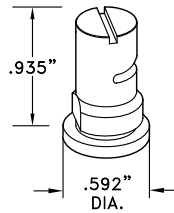


U.S. PATENT NO. 4828182, 5190222, 5275340

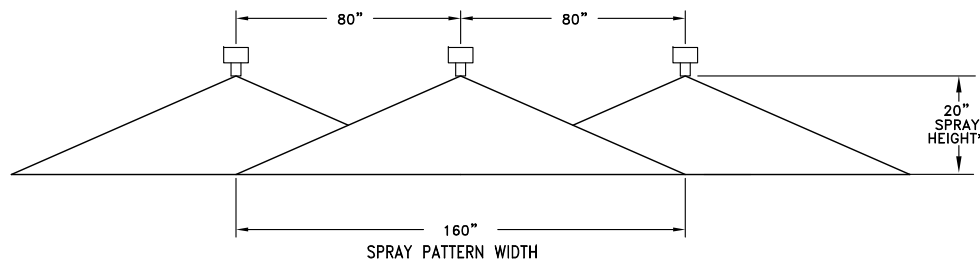
TFW TURBO **FloodJet®**
EXTRA WIDE ANGLE FLAT SPRAY TIPS



EXTRA WIDE ANGLE FLAT SPRAY WITH
TAPERED EDGE PATTERN

Tip No.	Liquid Pressure In PSI	Capacity 1 Nozzle In GPM	Capacity 1 Nozzle In oz./min.	Gallons Per Acre - 80" Spacing									
				4 mph	5 mph	6 mph	8 mph	10 mph	12 mph	14 mph	16 mph	18 mph	20 mph
TFW-12	20	0.85	109	15.8	12.6	10.5	7.9	6.3	5.3	4.5	3.9	3.5	3.2
	30	1.04	133	19.3	15.4	12.9	9.7	7.7	6.4	5.5	4.8	4.3	3.9
	40	1.20	154	22.3	17.8	14.9	11.1	8.9	7.4	6.4	5.6	5.0	4.5
	50	1.34	172	24.9	19.9	16.6	12.4	9.9	8.3	7.1	6.2	5.5	5.0
TFW-20	20	1.41	180	26.2	20.9	17.4	13.1	10.5	8.7	7.5	6.5	5.8	5.2
	30	1.73	221	32.1	25.7	21.4	16.1	12.8	10.7	9.2	8.0	7.1	6.4
	40	2.00	256	37.1	29.7	24.8	18.6	14.9	12.4	10.6	9.3	8.3	7.4
	50	2.24	287	41.6	33.3	27.7	20.8	16.6	13.9	11.9	10.4	9.2	8.3

Tip No.	Liquid Pressure In PSI	Capacity 1 Nozzle In GPM	Capacity 1 Nozzle In oz./min.	Gallons Per 1000 Sq. Ft. - 80" Spacing									
				4 mph	5 mph	6 mph	8 mph	10 mph	12 mph	14 mph	16 mph	18 mph	20 mph
TFW-12	20	0.85	109	0.36	0.29	0.24	0.18	0.14	0.12	0.10	0.09	0.08	0.07
	30	1.04	133	0.44	0.35	0.29	0.22	0.18	0.15	0.13	0.11	0.10	0.09
	40	1.20	154	0.51	0.41	0.34	0.26	0.20	0.17	0.15	0.13	0.11	0.10
	50	1.34	172	0.57	0.46	0.38	0.28	0.23	0.19	0.16	0.14	0.13	0.11
TFW-20	20	1.41	180	0.60	0.48	0.40	0.30	0.24	0.20	0.17	0.15	0.13	0.12
	30	1.73	221	0.74	0.59	0.49	0.37	0.29	0.25	0.21	0.18	0.16	0.15
	40	2.00	256	0.85	0.68	0.57	0.43	0.34	0.28	0.24	0.21	0.19	0.17
	50	2.24	287	0.95	0.76	0.63	0.48	0.38	0.32	0.27	0.24	0.21	0.19



*SPRAY HEIGHT MAY REQUIRE ADJUSTMENT TO PROVIDE A SUGGESTED DOUBLE OVERLAP CONDITION.

FEATURES:

- EXCELLENT SPRAY DISTRIBUTION QUALITY.
- EXTRA WIDE SPRAY PATTERN ALLOWS TIP TO BE USED FOR BOOMLESS SPRAY APPLICATIONS.
- IDEAL TIP FOR RESIDENTIAL AND ESTATE SPRAYERS.
- SINGLE TIP PROVIDES AN APPROXIMATE 160" SPRAY WIDTH.
- LARGE ORIFICE REDUCES LIKELIHOOD OF CLOGGING.
- RECOMMENDED OPERATING PRESSURE RANGE: 20-50 psi.
- ALL BRASS CONSTRUCTION.
- CAN BE USED WITH No. CP25599--NY QUICK TEEJET® CAP FOR AUTOMATIC ALIGNMENT.

DESCRIPTION:
TFW TURBO FLOODJET®
EXTRA WIDE ANGLE
FLAT SPRAY TIP



Spraying Systems Co.®
Spray Nozzles and Accessories
P.O. Box 7900 - Wheaton, Il. 60189-7900

Rev. No. 2

Ref.

DATA SHEET

50142

SHEET OF