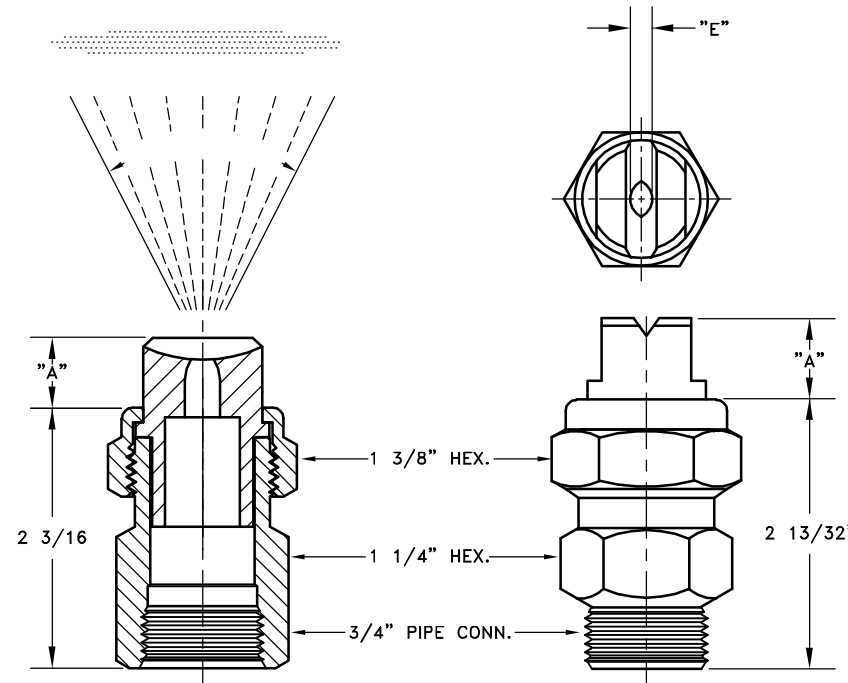



ANGLE AT 40 p.s.i.	NOZZLE NO.		"A"	APPROX. EQUIV. ORIFICE DIA.	"E" APPROX.	CAPACITY G.P.M. (Gallons Per Minute) AND SPRAY ANGLE AT p.s.i. (Lbs. per sq. inch)															
	TYPE T FEMALE CONN.	TYPE TT MALE CONN.				5	7	10	15	20	30	40	60	80	100	150	200	300	400		
80	3/4T 8040	3/4TT 8040	5/8"	5/32"	7/64"	1.4 54°	1.7 59°	2.0 64°	2.5 71°	2.8 74°	3.5 78°	4.0 80°	4.9 82°	5.7 84°	6.3 85°	7.7 86°	9.0 87°	11.0 87°	12.7 89°		
	3/4T 8050	3/4TT 8050	5/8"	11/64"	1/8"	1.8 54°	2.1 59°	2.5 64°	3.1 71°	3.5 74°	4.3 78°	5.0 80°	6.1 82°	7.1 84°	7.9 85°	9.7 86°	11.2 86°	13.7 87°	15.8 88°		
	3/4T 8060	3/4TT 8060	5/8"	3/16"	9/64"	2.1 55°	2.5 60°	3.0 64°	3.7 71°	4.2 74°	5.2 78°	6.0 80°	7.3 82°	8.5 84°	9.5 85°	11.6 85°	13.4 85°	16.4 86°	19.0 87°		
	3/4T 8070	3/4TT 8070	5/8"	13/64"	5/32"	2.5 56°	2.9 61°	3.5 65°	4.3 72°	4.9 75°	6.1 78°	7.0 80°	8.5 82°	9.9 83°	11.0 84°	13.5 85°	15.6 85°	19.2 86°	22.1 87°		
	3/4T 80100	3/4TT 80100	5/8"	1/4"	3/16"	3.5 56°	4.2 61°	5.0 65°	6.1 72°	7.1 75°	8.6 78°	10.0 80°	12.3 82°	14.1 83°	15.8 84°	19.4 85°	22.4 85°	27.4 86°	31.6 87°		
	3/4T 80150	3/4TT 80150	5/8"	19/64"	15/64"	5.3 57°	6.3 62°	7.5 66°	9.2 72°	10.6 75°	13.0 78°	15.0 80°	18.4 82°	21.2 83°	23.7 84°	29.0 85°	33.6 85°	41.1 86°	47.4 87°		
	3/4T 80200	3/4TT 80200	11/16"	11/32"	1/4"	7.1 58°	8.4 62°	10.0 66°	12.2 72°	14.1 75°	17.3 78°	20.0 80°	24.5 82°	28.2 83°	31.6 84°	38.8 85°	44.8 85°	54.8 86°	63.3 87°		
	3/4T 80250	3/4TT 80250	3/4"	3/8"	9/32"	8.8 58°	10.5 63°	12.5 66°	15.3 72°	17.7 75°	21.6 78°	25.0 80°	30.6 82°	35.3 83°	39.5 84°	48.4 84°	55.8 85°	63.3 86°	79.0 87°		
3/4T 80300	3/4TT 80300	7/8"	27/64"	5/16"	10.6 59°	12.5 64°	15.0 67°	18.4 73°	21.2 76°	26.0 79°	30.0 80°	36.7 82°	42.5 83°	47.5 83°	58.2 83°	67.1 84°	82.3 85°	95.0 86°			
65	3/4T 6540	3/4TT 6540	5/8"	5/32"	7/64"	1.4 41°	1.7 47°	2.0 52°	2.5 56°	2.8 60°	3.5 63°	4.0 65°	4.9 67°	5.7 68°	6.3 69°	7.8 70°	9.0 71°	11.0 72°	12.7 73°		
	3/4T 6550	3/4TT 6550	5/8"	11/64"	1/8"	1.8 41°	2.1 47°	2.5 52°	3.1 56°	3.5 60°	4.3 63°	5.0 65°	6.1 67°	7.1 68°	7.9 69°	9.7 70°	11.2 71°	13.7 72°	15.8 73°		
	3/4T 6560	3/4TT 6560	5/8"	3/16"	9/64"	2.1 42°	2.5 47°	3.0 52°	3.7 56°	4.2 60°	5.2 63°	6.0 65°	7.3 67°	8.5 68°	9.5 69°	11.6 70°	13.4 71°	16.4 72°	19.0 73°		
	3/4T 6570	3/4TT 6570	5/8"	13/64"	5/32"	2.5 42°	2.9 47°	3.5 52°	4.3 56°	4.9 60°	6.1 63°	7.0 65°	8.5 67°	9.9 68°	11.0 69°	13.5 70°	15.6 71°	19.2 72°	22.1 73°		
	3/4T 65100	3/4TT 65100	5/8"	1/4"	3/16"	3.5 43°	4.2 48°	5.0 53°	6.1 57°	7.1 61°	8.6 63°	10.0 65°	12.3 67°	14.1 68°	15.8 69°	19.4 70°	22.4 71°	27.4 72°	31.6 73°		
	3/4T 65150	3/4TT 65150	5/8"	19/64"	15/64"	5.3 45°	6.3 50°	7.5 54°	9.2 58°	10.6 62°	13.0 64°	15.0 65°	18.4 67°	21.2 68°	23.7 69°	29.0 70°	33.6 71°	41.1 72°	47.4 73°		
	3/4T 65200	3/4TT 65200	11/16"	11/32"	1/4"	7.1 46°	8.4 51°	10.0 54°	12.2 58°	14.1 62°	17.3 64°	20.0 65°	24.5 67°	28.2 68°	31.6 69°	38.8 70°	44.8 71°	54.8 72°	63.3 73°		
	3/4T 65250	3/4TT 65250	3/4"	3/8"	9/32"	8.8 46°	10.5 51°	12.5 54°	15.3 58°	17.7 62°	21.6 64°	25.0 65°	30.6 67°	35.3 68°	39.5 69°	48.4 69°	55.8 70°	63.3 71°	79.0 72°		
3/4T 65300	3/4TT 65300	7/8"	27/64"	5/16"	10.6 47°	12.5 52°	15.0 55°	18.4 59°	21.2 63°	26.0 64°	30.0 65°	36.7 66°	42.5 66°	47.5 67°	58.2 68°	67.1 69°	82.3 70°	95.0 71°			
	3/4T 5040	3/4TT 5040	5/8"	5/32"	1/8"	1.4 27°	1.7 31°	2.0 36°	2.5 42°	2.8 45°	3.5 48°	4.0 50°	4.9 51°	5.7 52°	6.3 53°	7.7 55°	9.0 56°	11.0 57°	12.7 58°		
	3/4T 5050	3/4TT 5050	5/8"	11/64"	9/64"	1.8 27°	2.1 31°	2.5 36°	3.1 42°	3.5 45°	4.3 48°	5.0 50°	6.1 51°	7.1 52°	7.9 53°	9.7 55°	11.2 56°	13.7 57°	15.8 58°		
	3/4T 5060	3/4TT 5060	5/8"	3/16"	5/32"	2.1 28°	2.5 32°	3.0 37°	3.7 42°	4.2 45°	5.2 48°	6.0 50°	7.3 51°	8.5 52°	9.5 53°	11.6 55°	13.4 56°	16.4 57°	19.0 58°		
	3/4T 5070	3/4TT 5070	5/8"	13/64"	11/64"	2.5 29°	2.9 33°	3.5 38°	4.3 43°	4.9 46°	6.1 48°	7.0 50°	8.5 51°	9.9 52°	11.0 53°	13.5 54°	15.6 55°	19.2 56°	22.1 57°		
	3/4T 50100	3/4TT 50100	5/8"	1/4"	13/64"	3.5 29°	4.2 33°	5.0 38°	6.1 43°	7.1 46°	8.6 48°	10.0 50°	12.3 51°	14.1 52°	15.8 53°	19.4 54°	22.4 55°	27.4 56°	31.6 57°		
	3/4T 50150	3/4TT 50150	5/8"	19/64"	15/64"	5.3 30°	6.3 34°	7.5 39°	9.2 43°	10.6 46°	13.0 48°	15.0 50°	18.4 51°	21.2 52°	23.7 53°	29.0 54°	33.6 55°	41.1 56°	47.4 57°		
	3/4T 50200	3/4TT 50200	11/16"	11/32"	9/32"	7.1 30°	8.4 34°	10.0 39°	12.2 43°	14.1 46°	17.3 48°	20.0 50°	24.5 51°	28.2 52°	31.6 53°	38.8 54°	44.8 55°	54.8 56°	63.3 57°		
	3/4T 50250	3/4TT 50250	3/4"	3/8"	5/16"	8.8 30°	10.5 34°	12.5 39°	15.3 43°	17.7 46°	21.6 48°	25.0 50°	30.6 51°	35.3 52°	39.5 53°	48.4 54°	55.8 55°	63.3 56°	79.0 57°		
3/4T 300	3/4TT 50300	7/8"	27/64"	11/32"	10.6 31°	12.5 35°	15.0 40°	18.4 44°	21.2 46°	26.0 48°	30.0 50°	36.7 51°	42.5 52°	47.5 53°	58.2 54°	67.1 55°	82.3 56°	95.0 57°			

FLAT SPRAY PATTERN



DESCRIPTION:
 3/4T---- & 3/4TT----
 TEEJET NOZZLES
 TABULATION OF CAPACITIES
 AND SPRAY ANGLES

 **Spraying Systems Co.**
 Spray Nozzles and Accessories
 P.O. Box 7900 - Wheaton, IL 60189-7900

Rev. No.	Data Sheet No.
Ref.	4365
	SHEET OF