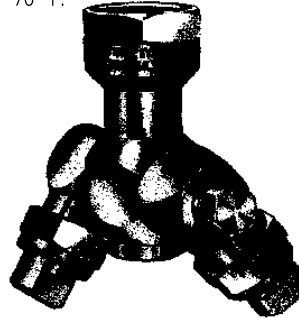
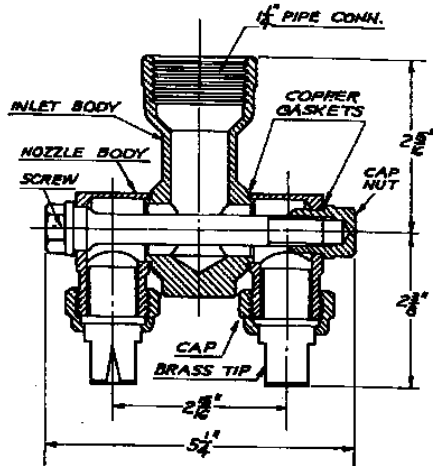


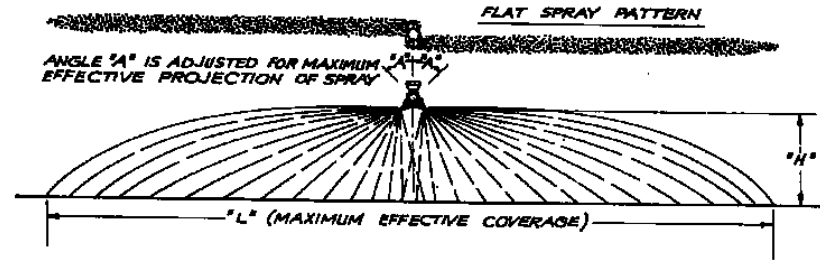
NOZZLE NO.	LIQUID PRESSURE IN P.S.I.	CAPACITY IN G.P.M.	SPRAYING HEIGHT "H" = 24'					SPRAYING HEIGHT "H" = 36'				
			"L" IN FEET		GALLONS PER ACRE			"L" IN FEET		GALLONS PER ACRE		
			3 M.P.H.	4 M.P.H.	5 M.P.H.	3 M.P.H.	4 M.P.H.	5 M.P.H.	3 M.P.H.	4 M.P.H.	5 M.P.H.	
4298-1/4-2T0C10	15	1.2	9	22.5	16.8	13.5	11	18.4	13.8	11.0		
	20	1.4	11	20.9	15.9	12.7	13	17.9	13.5	10.9		
	30	1.7	13	21.9	16.5	13.1	15	19.0	14.3	11.5		
	40	2.0	15	22.1	16.6	13.2	17	19.4	14.6	11.7		
	60	2.4	16	25.2	19.1	15.2	18	22.5	16.9	13.5		
4298-1/4-2T0C20	15	2.5	10	40.6	30.4	24.4	14	29.0	21.8	17.4		
	20	2.8	12	38.7	29.0	23.2	16	29.0	21.8	17.4		
	30	3.5	16	36.1	27.1	21.7	18	31.8	23.8	19.1		
	40	4.0	18	36.6	25.5	22.0	20	33.0	24.7	19.8		
	60	4.9	20	40.5	30.4	24.3	24	33.7	25.3	20.2		
4298-1/4-2T0C40	15	5.0	14	57.7	43.3	34.6	18	44.9	33.6	27.0		
	20	5.6	16	58.5	43.8	35.1	20	46.7	35.0	28.0		
	30	7.0	18	63.3	47.4	38.0	24	47.4	35.6	28.4		
	40	8.0	20	66.0	49.5	39.6	26	50.8	38.1	30.5		
	60	9.8	22	73.4	55.1	44.1	28	57.8	43.3	34.7		
4298-1/4-2T0C80	15	10.0	14	115.4	86.6	69.2	18	90.0	67.5	54.0		
	20	11.2	16	116.2	87.2	69.8	20	93.0	69.7	55.8		
	30	14.0	20	114.0	85.5	68.5	24	95.2	71.3	57.1		
	40	16.0	22	120.0	90.0	72.0	26	101.5	76.2	61.0		
	60	19.6	24	134.5	101.0	80.8	30	107.8	80.8	64.6		
4298-1/4-2T0C150	15	18.4	22	138.0	103.5	82.7	24	126.5	94.8	75.8		
	20	21.2	26	135.0	101.0	80.9	28	125.2	94.0	75.2		
	30	26.0	30	143.0	107.0	85.8	34	126.0	94.6	75.7		
	40	30.0	34	145.5	108.0	87.3	36	137.5	103.0	82.5		
	60	36.7	36	168.0	126.0	101.0	38	158.0	119.5	95.5		
4298-1/4-2T0C300	15	36.8	26	232.8	174.5	139.8	28	216.1	162.1	129.8		
	20	42.4	30	233.6	175.1	140.2	32	218.1	163.8	131.0		
	30	52.0	34	252.0	189.0	151.2	38	226.0	169.6	135.8		
	40	60.0	38	261.0	195.5	156.5	40	248.0	186.0	149.0		
	60	73.4	40	304.0	228.0	182.5	42	290.0	216.5	174.0		

NOZZLE NO.	LIQUID PRESSURE IN P.S.I.	CAPACITY IN G.P.M.	SPRAYING HEIGHT "H" = 48'					SPRAYING HEIGHT "H" = 60'				
			"L" IN FEET		GALLONS PER ACRE			"L" IN FEET		GALLONS PER ACRE		
			3 M.P.H.	4 M.P.H.	5 M.P.H.	3 M.P.H.	4 M.P.H.	5 M.P.H.	3 M.P.H.	4 M.P.H.	5 M.P.H.	
4298-1/4-2T0C10	15	1.2	13	15.7	11.8	9.5	15	13.5	10.2	8.1		
	20	1.4	15	15.6	11.7	9.4	17	13.7	10.3	8.3		
	30	1.7	17	16.8	12.6	10.1	19	15.1	11.3	9.1		
	40	2.0	19	17.4	13.1	10.4	21	15.7	11.8	9.4		
	60	2.4	20	20.3	15.2	12.1	22	18.4	13.8	11.1		
4298-1/4-2T0C20	15	2.5	16	25.2	18.9	15.1	18	22.4	16.8	13.4		
	20	2.8	18	26.0	19.5	15.6	20	23.3	17.5	14.0		
	30	3.5	20	28.6	21.4	17.1	22	26.0	19.5	15.6		
	40	4.0	22	30.0	22.5	18.0	24	27.5	20.6	16.5		
	60	4.9	26	31.1	23.3	18.6	28	28.8	21.6	17.3		
4298-1/4-2T0C40	15	5.0	20	40.4	30.3	24.2	22	36.7	27.6	22.0		
	20	5.6	22	42.5	31.9	25.5	24	38.9	29.2	23.3		
	30	7.0	26	44.0	33.0	26.4	28	40.8	30.6	24.5		
	40	8.0	28	47.2	35.4	28.3	30	44.0	33.0	26.4		
	60	9.8	32	50.5	37.9	30.3	34	47.5	35.7	28.5		
4298-1/4-2T0C80	15	10.0	22	73.5	55.2	44.2	26	62.2	46.7	37.3		
	20	11.2	24	77.6	58.2	46.6	28	66.6	50.0	40.0		
	30	14.0	28	81.5	61.1	48.9	32	71.3	53.5	42.8		
	40	16.0	30	88.0	66.0	52.8	34	77.5	58.1	46.6		
	60	19.6	32	101.0	75.7	60.6	36	89.5	67.3	53.8		
4298-1/4-2T0C150	15	18.4	26	116.8	87.6	70.1	28	108.0	81.3	65.0		
	20	21.2	30	116.6	87.5	70.0	32	109.3	82.0	65.6		
	30	26.0	36	119.0	89.3	71.4	38	113.0	84.7	67.7		
	40	30.0	38	130.0	97.7	78.2	40	123.8	92.7	74.2		
	60	36.7	40	151.0	113.4	90.7	42	144.0	108.0	86.5		
4298-1/4-2T0C300	15	36.8	30	202.2	151.8	121.4	32	189.2	142.0	113.7		
	20	42.4	34	206.0	154.5	123.8	36	194.5	146.0	116.8		
	30	52.0	40	214.8	161.0	129.0	42	204.5	153.5	122.9		
	40	60.0	42	236.2	177.2	142.0	44	226.0	169.5	135.8		
	60	73.4	44	287.0	215.3	172.1	46	265.0	199.0	159.0		

THE TABULATIONS ABOVE ARE BASED ON WATER TEMPERATURE AT 70° F.



NOZZLES CAN BE SET IN ANY POSITION ON A 360° ARC



DESCRIPTION:
NO. 4298 - 1 1/4 - 2T OC---
BOOMJET NOZZLE



Spraying Systems Co.

Spray Nozzles and Accessories
P.O. Box 7900 - Wheaton, Ill. 60189-7900

Rev. No.

Date Sheet No.

4298

Ref.

SHEET OF