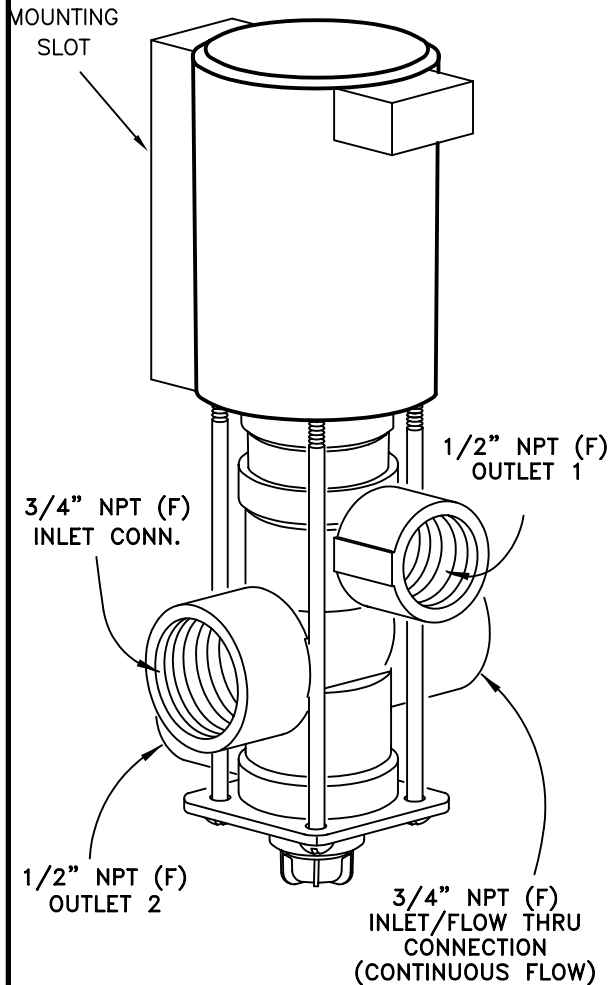


THE AA144P-1-3 THREE-WAY SOLENOID OPERATED DIRECTOVALVE WAS SPECIFICALLY DESIGNED TO PROVIDE BY-PASS CONTROL IN AGRICULTURAL SPRAYING APPLICATIONS. WHEN USED WITH No. 23520-PP THROTTLING VALVE OR A 4916- METERING ORIFICE PLATE IN THE BY-PASS LINE, IT CAN PROVIDE FOR A CONSTANT PRESSURE SPRAY SYSTEM.



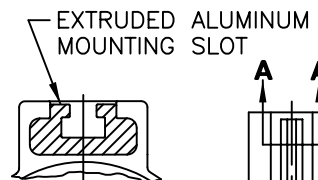
AA144A-1-3 DIRECTOVALVE ACTION

WITH ELECTRICAL POWER OFF, FLOW TO OUTLET 1 IS STOPPED AND LIQUID FLOWS TO OUTLET 2.

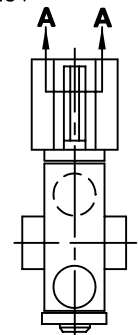
WITH ELECTRICAL POWER ON, FLOW TO OUTLET 2 IS STOPPED AND LIQUID FLOWS TO OUTLET 1.

FEATURES

- OPERATING PRESSURE RANGE 0 TO 65 PSI (4.5 bar).
- TWO 3/4" NPT or BSPT(F) INLET CONNECTIONS TO PROVIDE CONTINUOUS BYPASS FLOW.
- 1/2" NPT or BSPT(F) OUTLET TO SPRAY LINE.
- 1/2" NPT or BSPT(F) OUTLET FOR METERED BYPASS.
- MOUNTING SLOT FOR 6MM HEX BOLT. (BOLT NOT INCLUDED)
- LARGE FLOW CAPACITIES... ONLY 5 PSI (0.35 bar) PRESSURE DROP WITH 8 GPM (30 l/min) FLOW.
- COIL CAN BE CHANGED WITHOUT REMOVING VALVE FROM LINE.
- NYLON ENCAPSULATED 12 VDC COIL WITH 1/4" QUICK CONNECT TERMINALS... POWER REQUIREMENT 2.5 AMP.
- EXCELLENT CORROSION RESISTANCE.
- GLASS-FILLED POLYPROPYLENE (BLACK) VALVE BODY
- INTERNAL METAL PARTS ARE STAINLESS STEEL... OTHER METAL PARTS ARE EPOXY COATED
- CHEMICAL RESISTANT VITON RUBBER SEAT WASHER AND FIBER REINFORCED DIAPHRAGMS.
- SOLENOID REQUIRES NO ADJUSTMENT.



SECTION A-A (ENLARGED)



AA144P-1-3

DESCRIPTION:

AA144P-1-3 THREE-WAY SOLENOID OPERATED DIRECTOVALVE® BY-PASS VALVE



Spraying Systems Co.®

**Spray Nozzles and Accessories
P.O. Box 7900 - Wheaton, Il. 60189-7900**

Rev. No.

Data Sheet No.

Ref.

144P-1-3

SHEET OF