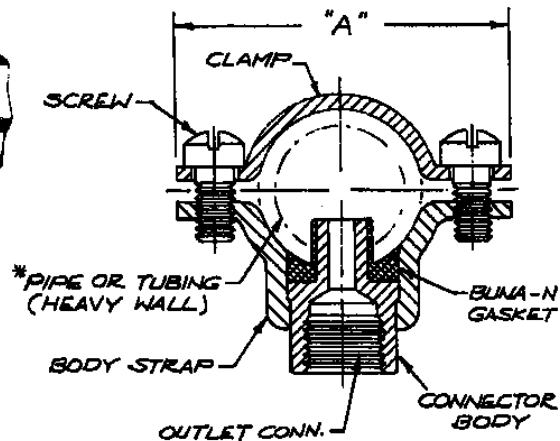
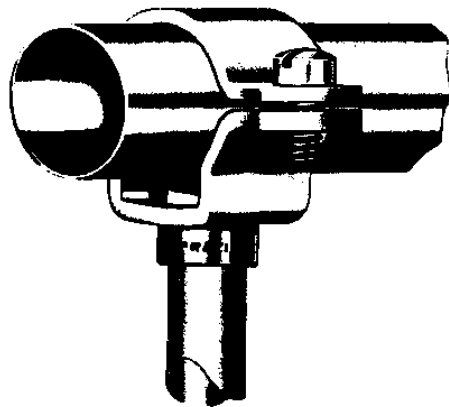


NO. 12521 HIGH PRESSURE SPLIT-EYELET CONNECTORS

THE NO. 12521-CONNECTORS ARE DESIGNED FOR PRESSURES UP TO 1000 P.S.I.. THEY ARE SIMPLY INSTALLED BY DRILLING AN ACCURATE 21/64" DIA. HOLE (BURR-FREE) IN THE PIPE OR TUBING - AND INSERTING THE GASKET. THEN THE CONNECTOR BODY STEM IS LUBRICATED WITH A LIGHT OIL OR SOAP FILM, AND INSERTED THRU THE GASKET. FINALLY, THE CLAMP IS ATTACHED AND SCREWS ARE TIGHTENED FOR A LEAK-PROOF CONNECTION.



HIGH PRESSURE SPLIT - EYELET CONNECTOR NO.	OUTLET CONN. N.P.T. (F)	CONSTRUCTION MATERIALS		*TO CLAMP ON	"A"
		CLAMPS & SCREWS	CONNECTOR BODY		
12521A-1/2 x 1/8	1/8"	ZINC PLATED STEEL	BRASS	1/2" PIPE	1 7/8"
12521K-1/2 x 1/4	1/4"			1 3/16" O.D. TUBING	
12522K-1/2 x 1/8 SS	1/8"	ZINC PLATED STEEL	STAINLESS STEEL	7/8" O.D. TUBING	
12522K-1/2 x 1/4 SS	1/4"				
12521A-3/4 x 1/8	1/8"	ZINC PLATED STEEL	BRASS	3/4" PIPE	2 1/8"
12521A-3/4 x 1/4	1/4"			1" O.D. TUBING	
12522K-3/4 x 1/8 SS	1/8"	ZINC PLATED STEEL	STAINLESS STEEL	1 1/16" O.D. TUBING	
12522K-3/4 x 1/4 SS	1/4"				
12521A-1 x 1/8	1/8"	ZINC PLATED STEEL	BRASS	1" PIPE	2 1/4"
12521A-1 x 1/4	1/4"			1 1/8" O.D. TUBING	
12522K-1 x 1/8 SS	1/8"	ZINC PLATED STEEL	STAINLESS STEEL	1 1/4" O.D. TUBING	
12522K-1 x 1/4 SS	1/4"			1 3/8" O.D. TUBING	

DESCRIPTION:

NO. 12521- HIGH PRESSURE SPLIT EYELET CONNECTORS



Spraying Systems Co.®

Spray Nozzles and Accessories
P.O. Box 7900 - Wheaton, Il. 60189-7900

Rev. No.

Data Sheet No.

12526

Ref.

SHEET OF