

A

B

C

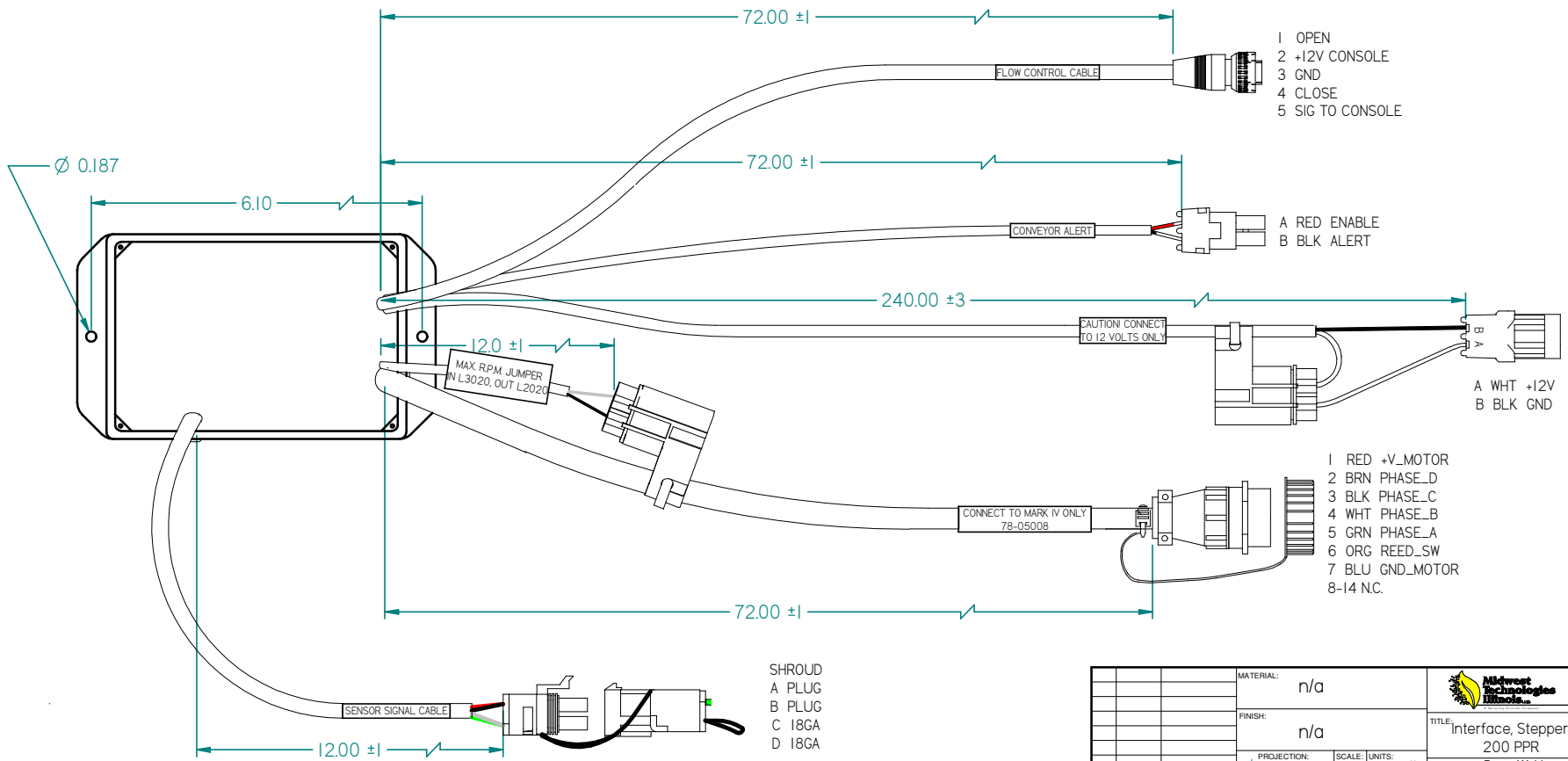
D

1

2

3

4



- A RED V+
- B BLK GND
- C GRN SIG TO CONSOLE
- D WHT MOTOR PULSES

- SHROUD
- A PLUG
- B PLUG
- C 18GA
- D 18GA

| | | | | | |
|--|---------|--|--|------------------------------------|--------------------|
| MATERIAL: | | n/a | | | |
| FINISH: | | n/a | | | |
| PROJECTION: | | SCALE: UNITS: INCH: X METRIC: 1:1 | | TITLE: Interface, Stepper, 200 PPR | |
| UNLESS OTHERWISE SPECIFIED TOLERANCE: | | 0-1" ± .1" 10-60" ± .1" .XX 1-5" ± .25" 60-120" ± .1" .XX 5-10" ± .5" 120" ± .3" .XX | | DRAWN BY: Bryan Webber | |
| RI | 6/24/03 | 10248 | | CHECKED BY: Amy Newburn | |
| RO | 3/11/99 | Released | | APPROVED BY: Duane Stewart | |
| REV. | DATE | DOC. No | | SHEET No: 1 of 1 | DWG No: C-78-05008 |
| Midwest Technologies IL, LLC. Claims proprietary right in the material disclosed herein. This document is not to be used in any way detrimental to the interest of Midwest Technologies IL, LLC. | | | | | |