

A

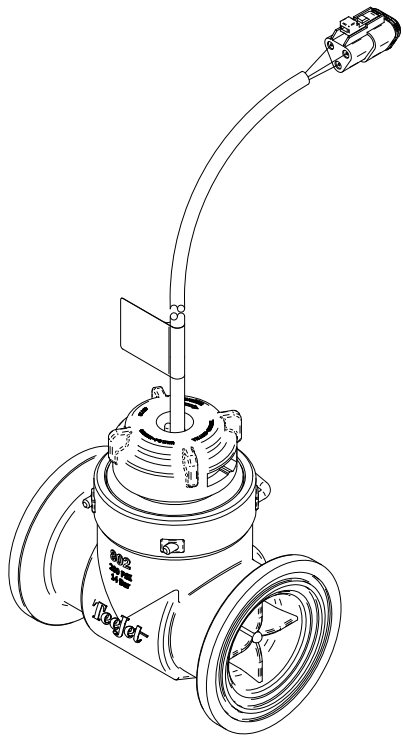
Item	Description	Part Number	QTY	U.M.
1	Sensor, PCB Assembly	16-00024	1	EA
2	Washer, Seat	57-10111	1	EA
3	Guide Vane Bearing 802 FM	57-10123	2	EA
4	Turbine Assembly 802 FM	57-10124	1	EA
5	Screw, #6-5/8" LG Flat Head	60-04031	2	EA
6	PIN, RETAINING, 802 FM	60-06008	1	EA
7	Body, 802 Flowmeter	64-50065	1	EA
8	Insert, Body 801 FM	64-50066	1	EA
9	Endcap, 802 Flowmeter	64-50067	1	EA
10	O-RING M46x3	64-90049	1	EA

1

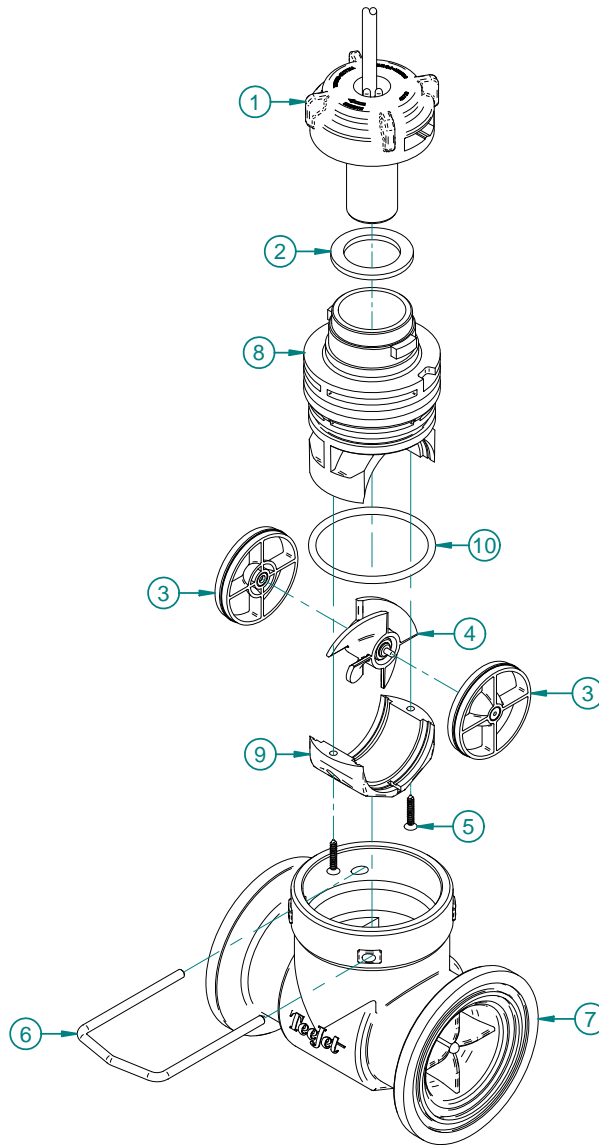
2

3

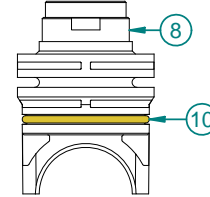
4



B

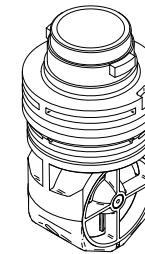


C



D

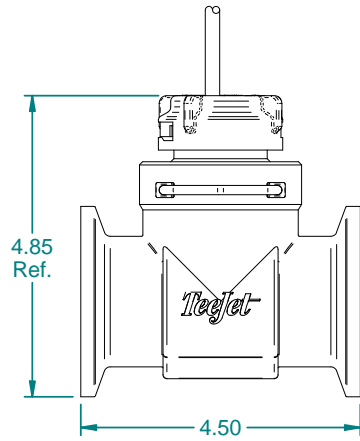
90-50256 KIT, REPAIR, 802 FLOWMETER				
Item	Description	Part Number	QTY	U.M.
3	GUIDE VANE BEARING, 802	57-10123	2	EA
4	TURBINE ASSEMBLY, 802	57-10124	1	EA
5	SCREW, SHEET MTL, #4x 5/8"	60-04031	2	EA
8	INSERT, BODY, 802	64-50066	1	EA
9	INSERT, END CAP, 802	64-50067	1	EA
10	O-RING, 802 FLOWMETER	64-90049	1	EA



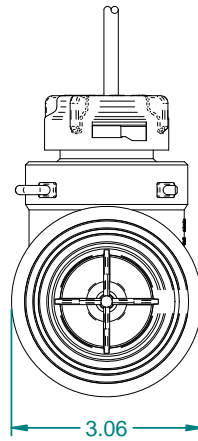
90-50256

MATERIAL:		See Notes			
FINISH:		See Notes		TITLE: Flowmeter, 802	
PROJECTION:		SCALE: UNITS: X 2:1 INCH: X METRIC: X		DRAWN BY: Bryan Reiser	
UNLESS OTHERWISE SPECIFIED TOLERANCE:		0-1" +/- .1" 10-60" +/- .1" .XX 1-5" +/- .25" 60-120" +/- .2" .XX 5-10" +/- .5" 120" +/- .3" .XX		CHECKED BY:	
REV. DATE		NOC. No.		APPROVED BY:	
R0 1/8/13				SHEET No: 2of2 DWG No: C-57-10122	
TeeJet Technologies Claims proprietary right in the material disclosed herein. This document is not to be used in any way detrimental to the interest of TeeJet Technologies.					

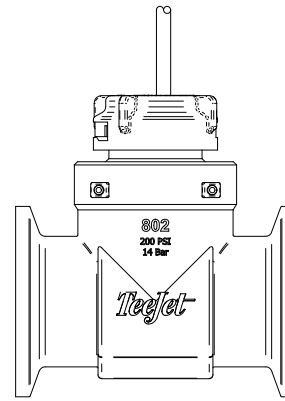
A



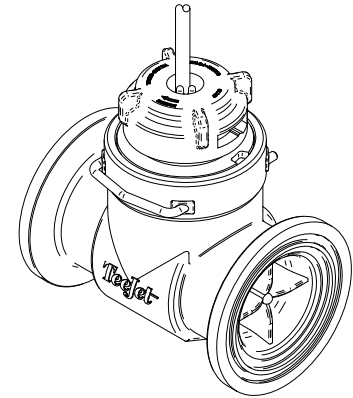
B



C



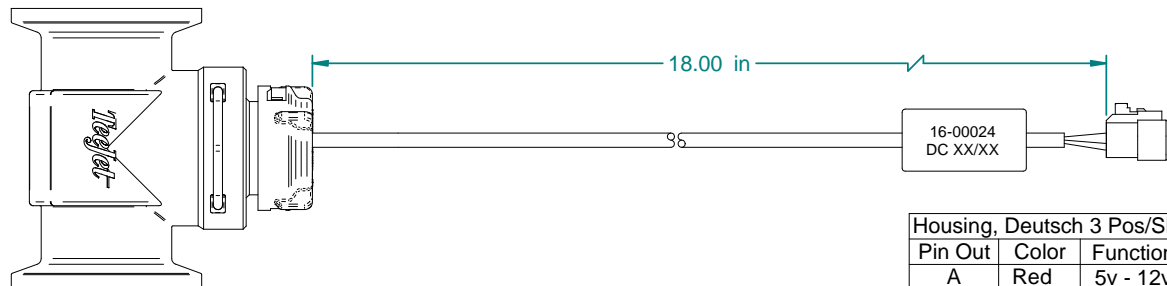
D



1

2

3



Material:

- 303 Stainless Steel
- 410 Stainless Steel
- Nylon
- Polypropylene
- Ruby
- Sapphire

Features:

- Efficient helical turbine design
- Easy access to turbine assembly for cleaning and maintenance
- Flange mount design for flexible installation options
- 2.5-130 GPM (10-492 LPM)

Housing, Deutsch 3 Pos/Skts		
Pin Out	Color	Function
A	Red	5v - 12v
B	White	Signal
C	Black	Ground

Notes:

- Approximate calibration #79 pulses/gal., 21 pulses/LIT.
- Vertical mounting position recommended
- 12 inches (30cm) of uninterrupted flow required before the flow meter and 6 inches (15cm) of uninterrupted flow required after flow meter.
- 45-05315 Flow meter interface cable required for Mid-Tech controls.

4

MATERIAL:		See Notes			
FINISH:		See Notes			
PROJECTION:		SCALE:	UNITS:	DRAWN BY: <i>Bryan Reiser</i>	
UNLESS OTHERWISE SPECIFIED TOLERANCE:		2:1	INCH	CHECKED BY:	
R0 1/8/13		0.1" ± .01"	10-60" ± .1"	APPROVED BY:	
REV.	DATE	1.5" ± .25"	60-120" ± .2"	SHEET No:	DWG No:
	NOC. No.	5-10" ± .5"	120" ± .3"	1 of 2	C-57-10122
TeeJet Technologies Claims proprietary right in the material disclosed hereon. This document is not to be used in any way detrimental to the interest of TeeJet Technologies.					