

A

B

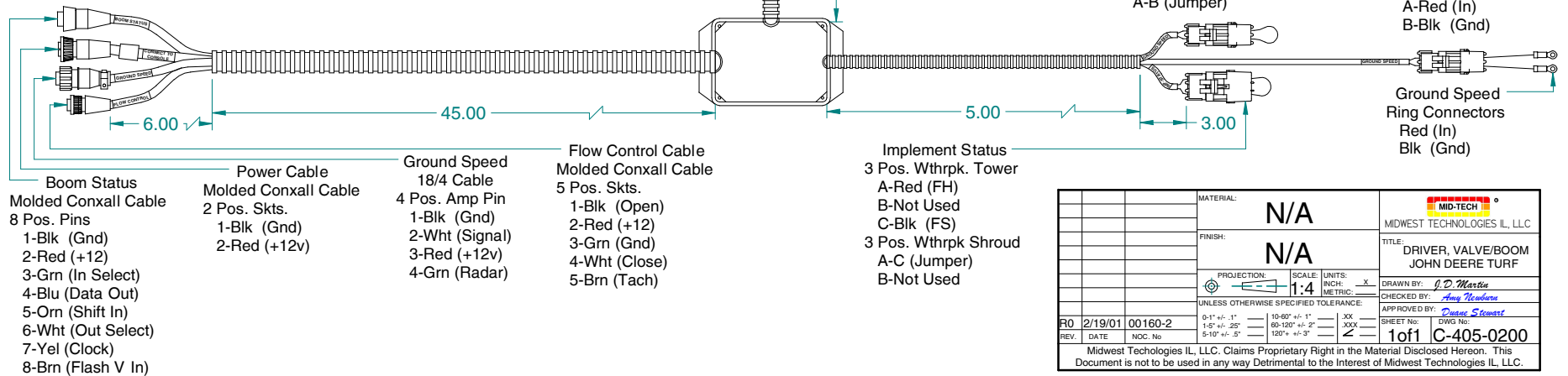
C

D

- Valve Driver**
 Sub-Assy. 45-05051
 3 Pos. Wthrpck. Tower
 A-Blk (Gnd)
 B-Red (+12v)
 C-Grn (Signal)
 6 Pos. Wthrpck. Tower
 A-Org (+12v)
 B-Pur (Gnd)
 C-Yel (MA)
 D-Wht (MB)
 E-Brn (+12v)
 F-Blu (Gnd)
- Boom Status**
 4 Pos. Wthrpck. Tower
 A-Red (B1)
 B-Grn (B2)
 C-Wht (B3)
 D-Blk (Spot)

NOTES:

- 1.0 Materials:
 Box: ABS 94-VO
- 2.0 Cables:
 Ground Speed
 Valve Driver
 Ground Speed Override
 Impliment Status
 Ground Speed
 Boom Status, 4 POS W.P.
 Boom I/O, 10" w/Pins
 Power 18-Skt
 25', ISC Solenoid/TASC
- 3.0 Description:
 Conductor: Stranded Tinned Copper
 Insulation: Color-Coded Polyvinylchloride
 Construction: Conductors are Cabled
 Jacket: Chrome Polyvinylchloride
- Characteristics:
 Temperature Range: 105deg. C
 Voltage Rating: 300 Volts
 UL Style 2464



- Boom Status**
 Molded Conxall Cable
 8 Pos. Pins
 1-Blk (Gnd)
 2-Red (+12)
 3-Grn (In Select)
 4-Blu (Data Out)
 5-Orn (Shift In)
 6-Wht (Out Select)
 7-Yel (Clock)
 8-Brn (Flash V In)

- Power Cable**
 Molded Conxall Cable
 2 Pos. Skts.
 1-Blk (Gnd)
 2-Red (+12v)

- Ground Speed**
 18/4 Cable
 4 Pos. Amp Pin
 1-Blk (Gnd)
 2-Wht (Signal)
 3-Red (+12v)
 4-Grn (Radar)

- Flow Control Cable**
 Molded Conxall Cable
 5 Pos. Skts.
 1-Blk (Open)
 2-Red (+12)
 3-Grn (Gnd)
 4-Wht (Close)
 5-Brn (Tach)

- Implement Status**
 3 Pos. Wthrpck. Tower
 A-Red (FH)
 B-Not Used
 C-Blk (FS)
 3 Pos. Wthrpck Shroud
 A-C (Jumper)
 B-Not Used

- Ground Speed Override**
 2 Pos. Wthrpck. Tower
 A-Red (RC)
 B-Blk (A)
 2 Pos. Wthrpck. Shroud
 A-B (Jumper)

- Ground Speed**
 2 Pos. Wthrpck. Tower
 A-Red (In)
 B-Blk (Gnd)
 2 Pos. Wthrpck. Shroud
 A-Red (In)
 B-Blk (Gnd)

- Ground Speed**
 Ring Connectors
 Red (In)
 Blk (Gnd)

MATERIAL:		N/A		MID-TECH MIDWEST TECHNOLOGIES ILL, LLC	
FINISH:		N/A		TITLE: DRIVER, VALVE/BOOM JOHN DEERE TURF	
PROJECTION:	SCALE:	UNITS:	DRAWN BY: <i>J.D. Martin</i>		
	1:4	INCH: X METRIC: X	CHECKED BY: <i>John Martin</i>		
UNLESS OTHERWISE SPECIFIED TOLERANCE:					
FR	2/19/01	00160-2	0-1" +/- .1"	10-60" +/- 1"	XXX
REV.	DATE	DOC No	1-5" +/- .25"	60-120" +/- 2"	XXX
			5-10" +/- .5"	120" +/- 3"	Z
			SHEET No: 1 of 1		DWS No: C-405-0200
Midwest Technologies ILL, LLC. Claims Proprietary Right in the Material Disclosed Hereon. This Document is not to be used in any way Detrimental to the Interest of Midwest Technologies ILL, LLC.					