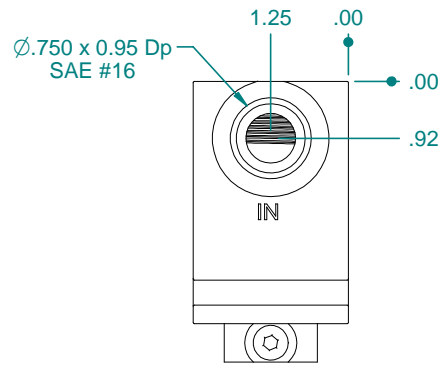
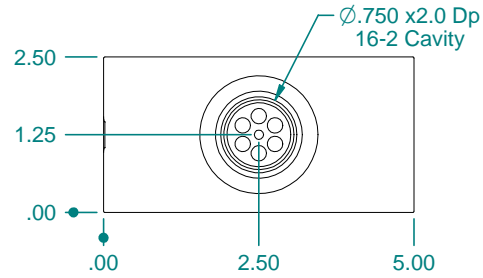


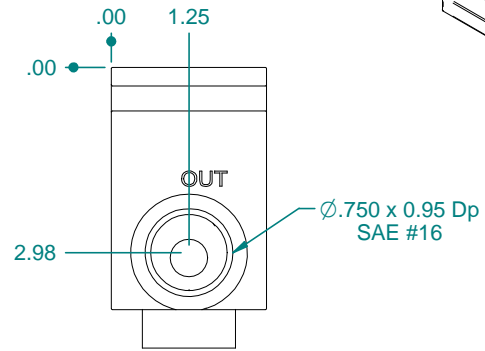
A



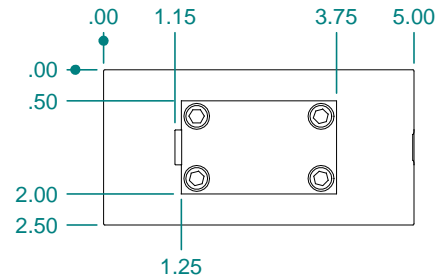
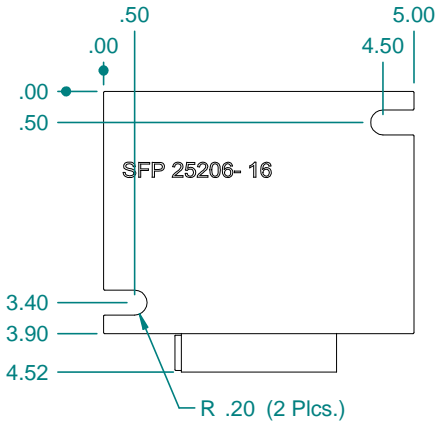
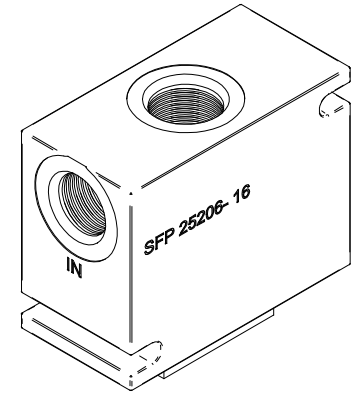
B



C



D



- Note: 1.0 Material: 6061
- 2.0 Machine Finish: 125 max. surface roughness
- 3.0 Protective Finish: None
- 4.0 Machined edges and coners: .002/.030 Radius or 45° Cham.

MATERIAL:		See Notes			
FINISH:		See Notes		TITLE: Manifold, 2 Port, w/Press Compensating, #16 SAE	
PROJECTION:		SCALE: UNITS: X 1:2 METRIC: X		DRAWN BY: Bryan Reiser	
UNLESS OTHERWISE SPECIFIED TOLERANCE:		10-60° ±.1°		CHECKED BY: Amy Debusch	
REV. DATE		1-15° ±.25°		APPROVED BY: Amy Debusch	
DOC. No.		5-10° ±.5°		SHEET No: 1 of 1	
		120° ±.3°		DWG No: C-35-03010	
Midwest Technologies IL, LLC. Claims proprietary right in the material disclosed hereon. This document is not to be used in any way detrimental to the interest of Midwest Technologies IL, LLC.					